

1 MECHANICAL PLAN

SCALE = 1/4" = 1'-0" REFER TO ARCHITECTURAL DRAWINGS FOR ALL DIMENSIONS

GENERAL MECHANICAL NOTES:

- ALL WORK SHALL COMPLY WITH LOCAL, STATE, AND FEDERAL CODES TO THE SATISFACTION OF CODE AUTHORITIES HAVING JURISDICTION.
- ALL WORK SHALL COMPLY WITH THE REQUIREMENTS OF NFPA 90A & 101, THE CLEAN AIR ACT AND THE AMERICANS WITH DISABILITIES ACT.
- COORDINATE ALL CEILING DEVICES, DUCTWORK, ETC. WITH LIGHTING, STRUCTURE, ETC. THROUGH GENERAL CONTRACTOR. REFER TO ALL DRAWINGS, (STRUCTURAL, PLUMBING, ELECTRICAL, ARCHITECTURAL, ETC.). NOTIFY ARCHITECT/ENGINEER CONCERNING ANY CONFLICTS NOTED PRIOR TO BIDS FOR CLARIFICATION TO THE SATISFACTION OF THE BIDDER. REFER TO SPECIFICATIONS FOR REQUIREMENTS. REFER TO LATEST ARCHITECTURAL REFLECTED CEILING PLAN. COORDINATE ALL CEILING DEVICE LOCATIONS WITH CEILING GRID.
- UNLESS SPECIFICALLY NOTED, ALL SUPPLY, RETURN, AND OUTSIDE AIR DUCTWORK SHALL BE UNLINED AND WRAP DUCTWORK EXTERNALLY. DUCT SIZES SHOWN ARE CLEAR METAL TO METAL.
- HARDCAST ALL DUCTWORK JOINTS FOR AIRTIGHT SYSTEM. REFER TO DETAILS FOR DUCTWORK TAP, SPLITTER, BRANCH CONFIGURATION, ETC. INSTALL IN ACCORDANCE WITH SMACNA RECOMMENDATIONS AND INSTALLATION GUIDELINES.
- VERIFY ALL OUTSIDE AIR INTAKES ARE A MINIMUM OF TEN FEET FROM EXHAUST OUTLETS, SEWER VENTS, ETC.
- PROGRAMMABLE THERMOSTAT SHALL REMAIN IN FAN "AUTO" MODE.
- MECHANICAL CONTRACTOR SHALL COORDINATE THROUGH GENERAL CONTRACTOR TO PROVIDE OPENINGS FOR DUCTWORK IN WALLS THAT EXTEND FULL HEIGHT ABOVE LAY-IN CEILINGS.
- CONTRACTOR SHALL SEAL ALL PIPING AND DUCT PENETRATIONS THROUGH WALLS AS PER THE RATED UL DESIGNATION'S REQUIREMENTS. REFER TO ARCHITECTURAL PLANS FOR ALL UL RATINGS.
- PROVIDE ACCESS PANELS PER SPECIFICATIONS TO ACCESS ALL DEVICES REQUIRING MAINTENANCE/ADJUSTMENT WHERE NECESSARY. COORDINATE WITH ARCHITECTURAL FINISH SCHEDULE.
- ACCESS PANELS THAT ARE INSTALLED IN EXPOSED AREAS SHALL BE FACTORY PRIMED AND FIELD PAINTED. COLOR TO BE SELECTED BY ARCHITECT.
- CONTRACTOR SHALL CAP AND SEAL ALL DUCTWORK DURING CONSTRUCTION TO PREVENT CONTAMINATION DUE TO CONSTRUCTION DEBRIS.
- ALL DAMPERS, ACCESS PANELS, ETC SHALL BE INSTALLED FOR MAXIMUM ACCESSIBILITY.
- RUN MAIN TRUNK LINES APPROXIMATELY AS SHOWN. COORDINATE EXACT LOCATION WITH STRUCTURE, PIPING, CONDUIT, DEVICES ABOVE CEILING, ETC. MAKE ALL REQUIRED OFFSETS, TRANSITIONS, ETC. (MAINTAIN EQUIVALENT DUCT FREE AREA IN TRANSITIONS). CONTRACTOR SHALL FIELD MEASURE/VERIFY SPACING TO RUN DUCT PRIOR TO FABRICATION OR INSTALLATION OF ANY DUCTWORK. RUN DUCTWORK TO MINIMIZE OFFSETS, CHANGES IN ELEVATION, TRANSITIONS, ETC. COORDINATE WITH OTHER TRADES.
- PROVIDE MANUAL DAMPER AT DUCT TAP SPIN FITTING AND BALANCE TO CFM INDICATED AT GRILLE. DUCT TAPS SHALL BE A MINIMUM OF 12" FROM END OF SUPPLY AIR DUCT.
- REVIEW COMPLETE SET OF CONTRACT DOCUMENTS PRIOR TO SUBMITTING BID.

MECHANICAL KEYNOTES:

- INSTALL AIR HANDLER UNIT ON METAL FRAME IN AN EMERGENCY DRAIN PAN. STAND SHALL BE TALL ENOUGH TO ALLOW ADEQUATE PASSAGE OF RETURN AIR DUCTWORK. EMERGENCY DRAIN PAN SHALL EXTEND 4" ALL AROUND PERIMETER OF UNIT WITH A 3/4" INSULATED EMERGENCY DRAIN PIPE WITH BALL VALVE (NC). EXTEND INSULATED COPPER CONDENSATE DRAIN LINE TO FLOOR DRAIN IN ROOM AND TERMINATE DOWN WITH 2" AIR GAP. PROVIDE FLOAT SWITCH IN EMERGENCY DRAIN PAN AND INTERLOCK WITH AHU FAN MOTOR.
- PROVIDE A 120/1/60 ELECTRIC MOTORIZED DAMPER (INSULATED) AND MANUAL BALANCING DAMPER IN OUTSIDE AIR DUCT THIS VICINITY. INTERLOCK MOTORIZED DAMPER TO RESPECTIVE A/C UNIT TO OPEN WHEN UNIT IS HEATING OR COOLING ONLY AND CLOSE WHEN UNIT IS OFF. PROVIDE ALL RELAYS, WIRING, ETC. REQUIRED FOR PROPER OPERATION. INSTALL MOTORIZED DAMPER IN AN ACCESSIBLE LOCATION. SEE HVAC SCHEDULE FOR OUTSIDE AIR REQUIREMENTS.
- INSTALL NEW CEILING MOUNTED EXHAUST FAN IN THIS VICINITY. COORDINATE FINAL LOCATION WITH ARCHITECTURAL REFLECTIVE CEILING PLAN.
- 10"x8" EXHAUST AIR DUCT RISES UP TO EXHAUST RELIEF HOOD ON ROOF IN THIS VICINITY. EXHAUST RELIEF HOOD SHALL BE COOK MODEL 8PR OR APPROVED EQUAL. COORDINATE EXACT LOCATION WITH STRUCTURE. HOOD SHALL BE PROVIDED WITH BIRDSCREEN AND INSULATED, STANDING SEAM SLOPED ROOF CURB. VERIFY ROOF SLOPE PRIOR TO ORDER.
- PROVIDE AND INSTALL A WALL MOUNTED INDOOR UNIT IN THIS VICINITY. INSTALL AS PER MANUFACTURER'S INSTRUCTIONS AND DIRECTIONS, PROVIDING ALL ACCESSORIES AND ITEMS REQUIRED. COORDINATE LOCATION & MOUNTING HEIGHT WITH ARCHITECT/GENERAL CONTRACTOR PRIOR TO ROUGH-IN. ROUTE INSULATED CONDENSATE DRAIN TO HUB DRAIN IN WALL AND TERMINATE WITH 2" AIR GAP. COORDINATE HUB DRAIN LOCATION WITH PLUMBING CONTRACTOR.
- INSTALL SIMPLE MA (MODEL PAC-YT53CRAU-E) THERMOSTAT ON WALL IN THIS VICINITY. THERMOSTAT SHALL BE CAPABLE OF TEMPERATURE SENSING.
- INSTALL NEW 7-DAY PROGRAMMABLE THERMOSTAT WHERE INDICATED. LABEL EACH THERMOSTAT TO INDICATE UNIT SERVED.
- PROVIDE A WALL LOUVER WITH BIRDSCREEN AT SIZE INDICATED, DRIP CAP, EXTENDED SILL, AND ANODIZED FINISH (COLOR BY ARCH). LOUVER SHALL BE GREENHECK EVH-550D WIND-DRIVEN RAIN LOUVER, EXTRUDED ALUM., DRAINABLE, OR APPROVED EQUAL WITH BACKDRAFT DAMPER. CONNECT DUCTWORK FULL SIZE TO LOUVER. COORDINATE EXACT LOCATION WITH ARCHITECTURAL ELEVATIONS AND STRUCTURAL CROSS BRACING. CONTRACTOR SHALL PROVIDE PLENUM BOX FULL SIZE OF LOUVER FOR DUCT CONNECTION.
- MAINTAIN MINIMUM 10" CLEARANCE BETWEEN FRESH AIR INTAKE AND EXHAUST DISCHARGE HOODS, FLUES, PLUMBING VENTS, ETC.
- PROVIDE A MINI-SPLIT CONDENSING UNIT IN THIS VICINITY ON NEW MECHANICAL PAD. PROVIDE ALL REFRIGERANT ACCESSORIES AND ITEMS REQUIRED FOR PROPER INSTALLATION. INSTALL ON MINI-SPLIT STAND. SECURE UNIT TO THE STAND. ANCHOR UNIT TO MECHANICAL PAD. CONDENSING UNITS SHALL BE INSTALLED SO THAT RUN OFF WATER FROM ROOF DOES NOT POUR DIRECTLY ONTO UNIT. PROVIDE TWO (2) COATS OF WEATHERPROOF MASTIC ON EXTERIOR OF INSULATED REFRIGERANT LINES (TYPICAL).
- INSTALL CONDENSING UNIT IN THIS VICINITY ON NEW CONCRETE PAD. PROVIDE ALL REFRIGERANT ACCESSORIES AND ITEMS REQUIRED FOR PROPER INSTALLATION. INSTALL ON BIGFOOT SUPPORTS ANCHORED TO SLAB. ANCHOR UNITS TO SUPPORTS AS REQUIRED TO MEET LOCAL WIND SPEED REQUIREMENTS. CONDENSING UNITS SHALL BE INSTALLED SO THAT RUN OFF WATER FROM ROOF DOES NOT POUR DIRECTLY ONTO UNIT. INSTALL TO MAINTAIN MAINTENANCE CLEARANCE REQUIREMENTS.
- REFRIGERANT LINES SHALL BE GOVERNMENT TYPE "L" HARD COPPER. ALL REFRIGERANT LINES (INDOORS & OUTDOORS) SHALL BE INSULATED WITH 3/4" CLOSED CELL, TUBE INSULATION, AEROTUBE, ARMAFLEX OR EQUIVALENT. PROVIDE TWO (2) COATS OF WEATHERPROOF MASTIC ON EXTERIOR OF INSULATED REFRIGERANT LINES (TYPICAL).
- CONTRACTOR SHALL PROVIDE AND INSTALL A AIREX TITAN GS30 OUTLET FOR EACH REFRIGERANT LINE SET PENETRATIONS AT EXTERIOR WALL.
- INSTALL MANUAL VOLUME DAMPER IN ACCESSIBLE LOCATION WHERE INDICATED. (TYPICAL)
- REFRIGERANT PIPING RISES UP INSIDE OF EXTERIOR WALL TO MAXIMUM HEIGHT AND ROUTES ABOVE CEILING TO SERVE AIR HANDLING UNIT. CONTRACTOR SHALL COORDINATE WITH MANUFACTURER AND INSTALL REFRIGERANT PIPE IN ACCORDANCE TO MANUFACTURERS RECOMMENDATION. PROVIDE SUCTION LINE ACCUMULATOR AND SOLENOID VALVE AS PER MANUFACTURERS RECOMMENDATION. MANUFACTURER SHALL SUBMIT RECOMMENDED REFRIGERANT LIQUID AND SUCTION LINE SIZES AND ACCESSORIES DURING SHOP DRAWINGS. PROVIDE SUPPORT FOR THE REFRIGERANT PIPING AND SEAL PENETRATIONS AIR AND WATER TIGHT.
- CONTRACTOR SHALL UTILIZE DOUBLE WALL PAINT GRIPPED DUCTWORK IN EXPOSED AREAS. COORDINATE EXACT PAINT COLOR WITH ARCHITECT. COORDINATE REQUIRED PAINTING WITH GENERAL CONTRACTOR PRIOR TO BID. DIMENSIONS SHOWN ON THE DRAWINGS ARE CLEAR INTERNAL METAL TO METAL.
- PROVIDE FIRE DAMPER AT RATED WALL PENETRATION WITH ACCESS PANEL IN CORRESPONDING DUCT FOR FIRE DAMPER MAINTENANCE. LABEL ACCESS PANEL WITH PHENOLIC LABEL WITH MINIMUM 1/2" LETTERING LABELED "FIRE DAMPER".
- CONTRACTOR SHALL UNDERCUT DOOR 3/4".
- 4" CONCRETE PAD BY GENERAL CONTRACTOR. COORDINATE WITH THE ARCHITECT ON EXACT LOCATION PRIOR TO ROUGH IN. REFER TO ARCHITECTURAL DRAWINGS FOR INSTALLATION INSTRUCTIONS.
- INTERNALLY LINE RETURN AIR DUCTWORK WITH 1" JOHNS MANVILLE LINACUSTIC RC-HP, OR APPROVED EQUAL DUCT LINER.

NOTE:

FOR AREAS WITH EXPOSED SYSTEMS (REFER TO ARCHITECTURAL REFLECTED CEILING PLAN)

- 103 LOBBY
- 104 CIRCULATION DESK
- 105 ADULT READING
- 106 CHILDREN'S AREA
- 107 YOUNG ADULTS
- 121 MEETING ROOM

FOR EXPOSED DUCTWORK, CONTRACTOR SHALL UTILIZE DOUBLE WALL PAINT GRIPPED DUCTWORK. COORDINATE EXACT PAINT COLOR WITH ARCHITECT. COORDINATE REQUIRED PAINTING WITH GENERAL CONTRACTOR PRIOR TO BID. DIMENSIONS SHOWN ON THE DRAWINGS ARE CLEAR INTERNAL METAL TO METAL.

NOTE:

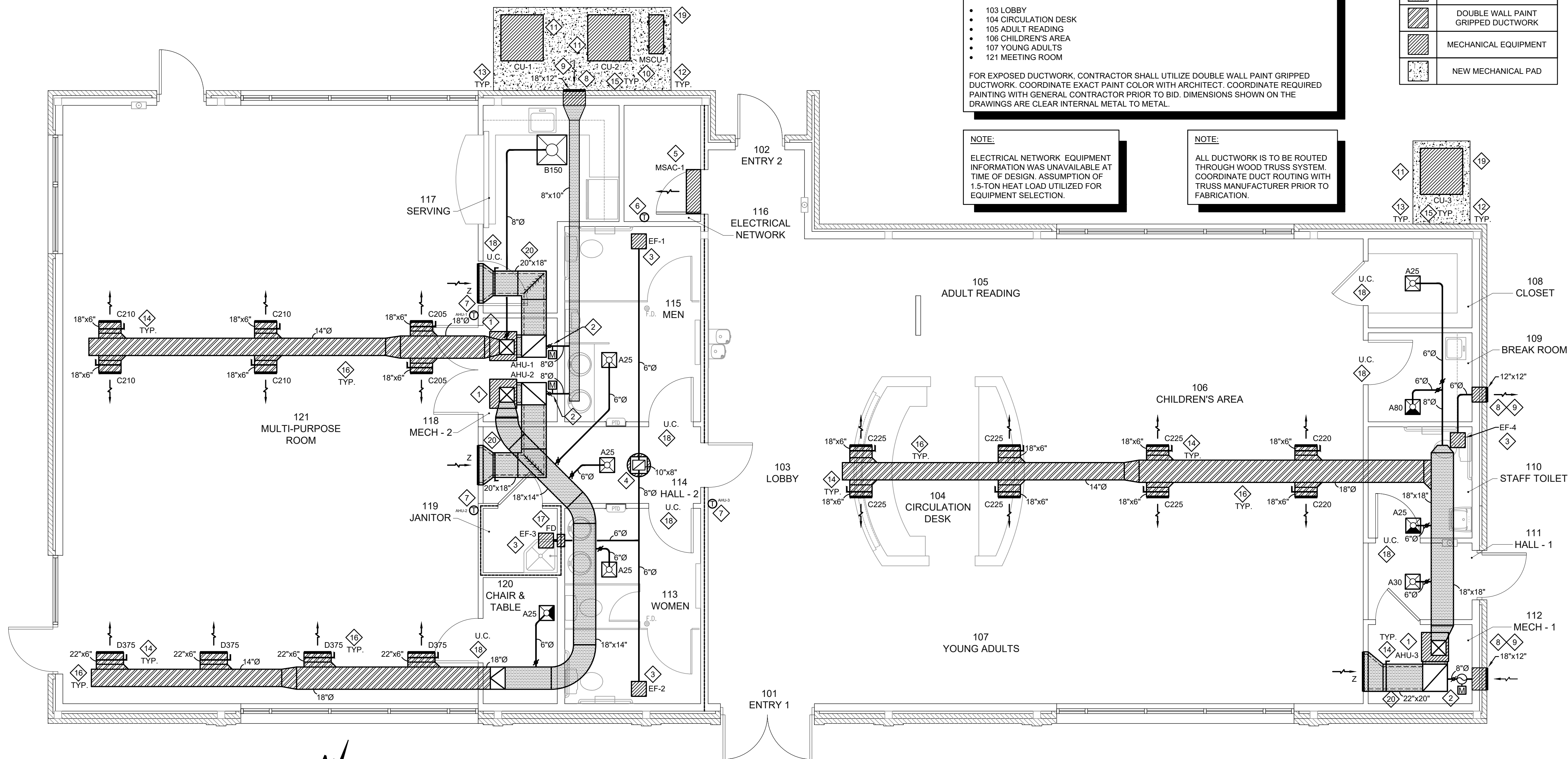
ELECTRICAL NETWORK EQUIPMENT INFORMATION WAS UNAVAILABLE AT TIME OF DESIGN. ASSUMPTION OF 1.5-TON HEAT LOAD UTILIZED FOR EQUIPMENT SELECTION.

NOTE:

ALL DUCTWORK IS TO BE ROUTED THROUGH WOOD TRUSS SYSTEM. COORDINATE DUCT ROUTING WITH TRUSS MANUFACTURER PRIOR TO FABRICATION.

HATCH LEGEND

	LOW PRESSURE RECTANGULAR DUCTWORK
	DOUBLE WALL PAINT GRIPPED DUCTWORK
	MECHANICAL EQUIPMENT
	NEW MECHANICAL PAD



AIR HANDLER UNIT (DIRECT EXPANSION)																							
UNIT		FAN					COOLING								HEATING					REMARKS		NOTES	
NO.	LOCATION	MIN CFM	CFM FA	EXT SP.	FAN HP	ELECTRIC SERVICE	MIN B.T.U.H OUTPUT	EVAP TEMP (°F)	AMB TEMP. (°F)	ENT. TEMP.		LEAV. TEMP		MIN. BTUH OUTPUT	K.W. ELEC. STRIP		NO. STAGES	ENT AIR (°F)	LEAV AIR (°F)				ELECTRICAL SERVICE
										D.B. °F	W.B. °F	D.B. °F	W.B. °F		MIN.	MAX.							
AHU-1	MEETING ROOM	1,400	180	1"	0.5	208/1/60	42,000	40.0	95.0	77.5	64.3	55.0	54.0	36,900	10.8	--	2	63.6	87.9	208/1/60	TRANE MODEL 5TAM5C04A OR APPROVED EQUAL	1, 2, 3	
AHU-2	MEETING ROOM	1,600	190	1"	0.5	208/1/60	48,000	40.0	95.0	77.3	64.2	55.0	54.0	36,900	10.8	--	2	64.1	85.4	208/1/60	TRANE MODEL 5TAM5D05A OR APPROVED EQUAL	1, 2, 3	
AHU-3	LIBRARY	1,950	205	1"	1	208/1/60	60,000	40.0	95.0	77.0	64.0	55.0	54.0	61,500	18.0	--	2	64.7	93.9	208/1/60	TRANE MODEL 5TAM5D06A OR APPROVED EQUAL	1, 2, 3	

NOTES:
1. AIR HANDLING UNIT SHALL BE INTERNALLY FUSED AND WIRED FOR SINGLE POINT CONNECTION.
2. AIR HANDLING UNIT SHALL BE PROVIDED WITH INTEGRAL DISCONNECT.
3. PROVIDE AND INSTALL BI-POLAR IONIZATION UNIT MEETING UL 2998 IN UNIT.

VRF INDOOR UNIT SCHEDULE																				
System Tag	Room Name	Tag Reference	M-NET Address	Model	Type	Nominal Cooling Capacity (BTU/h)	Nominal Heating Capacity (BTU/h)	Cooling Design Entering Temp DB/WB (°F) / [Water in temp]	Heating Design Entering Temp DB/WB (°F) / [Water in temp]	Corrected Capacity				Refrig Pipe Dim Liquid/Suction (inch)	Fan Speed Setting	Peak Fan Airflow (cfm) / [Design gpm G(US)/min]	Voltage / Phase	Electrical MCA/MFS	Notes / Options	
										Cooling Diversity Full/Partial (See Note 5, 6)	Cooling Total Capacity (BTU/h)	Cooling Sensible Capacity (BTU/h)	Heating Diversity Full/Partial (See Note 5, 6)							Heating Capacity (BTU/h)
MSCU-1	116 ELECTRICAL NETWORK	MSAC-1	N/A	PKA-A18HA4	Wall -Mounted	18,000	19,000	72.0/60.1	70	FULL DEMAND	16,014.8	11,963.9	FULL DEMAND	12,462.4	1/4 / 1/2	HIGH	425	208/230V/1-phase	Powered by Outdoor	1, 2, 3, 4

NOTES:
1. NOMINAL COOLING CAPACITIES ARE BASED ON INDOOR COIL EAT OF 80/67°F (DB/WB), OUTDOOR OF 95°F (DB).
2. NOMINAL HEATING CAPACITIES ARE BASED ON INDOOR COIL EAT OF 70°F (DB), OUTDOOR OF 43°F (WB).
3. SEE OUTDOOR UNIT SCHEDULE FOR OUTDOOR AMBIENT CONDITIONS, CONNECTED CAPACITY, AND OTHER FACTORS ASSOCIATED WITH CORRECTED CAPACITIES.
4. CONTRACTOR SHALL PROVIDE AND INSTALL A PLASMA AIR MODEL 600 IONIZER IN THE CEILING CASSETTE. CONTRACTOR SHALL INTERLOCK IONIZATION MODULE'S OPERATION WITH BLOWER ON AIR HANDLING UNIT. INSTALL IONIZATION MODULE PER MANUFACTURERS RECOMMENDATIONS. IONIZATION MODULE SHALL MEET UL 2998.

VRF OUTDOOR UNIT SCHEDULE																
System Tag	Tag Reference	M-NET Address	Model Number	Nominal Cooling Capacity (BTU/h)	Nominal Heating Capacity (BTU/h)	Nom System Connected Capacity (%) of (NOM)	Design Cooling Outdoor Temp DB (°F)	Design Heating Outdoor Temp WB (°F)	Corrected Cooling Total Capacity (BTU/h)	Corrected Heating Capacity (BTU/h)	Sound Pressure (dBA)	Electrical-Per Module				Notes / Options
												208/230				
												Voltage / Phase	MCA 208/230	RFS	MOCP	
MSCU-1	MSCU-1	N/A	PUZ-A18NH44	18,000	19,000	100.0 %	95.0	21.3	16,014.8	12,462.4	48/47	208/230V / 3-phase 3-wire	13	15	20	1, 2, 3

NOTES:
1. NOMINAL COOLING CAPACITIES ARE BASED ON INDOOR COIL EAT OF 80/67°F (DB/WB), OUTDOOR OF 95°F (DB).
2. NOMINAL HEATING CAPACITIES ARE BASED ON INDOOR COIL EAT OF 70°F (DB), OUTDOOR OF 43°F (WB).
3. ADDED FIELD CHARGE LISTED IS IN ADDITION TO FACTORY CHARGE, THIS MUST BE UPDATED BASED UPON FINAL AS-BUILT PIPING LAYOUT.

GRILLE SCHEDULE						
LABEL	SIZE	SERVICE	LOCATION	CONSTRUCTION MATERIAL	FINISH	REMARKS
A	12"x12"	SUPPLY	CEILING	ALUMINUM	W.B.E	TITUS MODEL TMS-AA W/ 6"Ø NECK OR APPROVED EQUAL
B	24"x24"	SUPPLY	CEILING	ALUMINUM	W.B.E	TITUS MODEL TMS-AA W/ 10"Ø NECK OR APPROVED EQUAL
C	18"x6"	SUPPLY	DUCT	ALUMINUM	BY ARCH.	TITUS MODEL 300FS OR APPROVED EQUAL
D	22"x6"	SUPPLY	DUCT	ALUMINUM	BY ARCH.	TITUS MODEL 300FS OR APPROVED EQUAL
Z	32"x32"	RETURN	WALL	ALUMINUM	BY ARCH.	TITUS MODEL 350FL W/REMOVEABLE CORE OR APPROVED EQUAL

NOTES:
1. TOPS OF ALL DIFFUSERS SHALL BE INSULATED. REFER TO DETAIL
2. SHEET METAL CONTRACTOR TO PROVIDE SHEET METAL CEILING BOX FOR ATTACHMENT OF DUCTWORK TO AIR REGISTER.
3. ALL SUPPLY DIFFUSERS SHALL BE 4-WAY PATTERN UNLESS SHOWN OTHERWISE ON PLANS, REFER TO DETAIL

FAN SCHEDULE												
NO.	SERVICE	MINIMUM CFM	EXTERNAL S.P.	RPM	FAN HP	SONES	TYPE	DRIVE	ELECTRICAL SERVICE	CONTROL	REMARKS	NOTES
EF-1	115 MEN	100	0.5	800	57.6 W	2.0	CEILING	DIRECT	120/1/60	OCC SENSOR W/ 15 MIN TIMER	COOK MODEL GC-186 OR APPROVED EQUAL	1, 2
EF-2	113 WOMEN	100	0.5	800	57.6 W	2.0	CEILING	DIRECT	120/1/60	OCC SENSOR W/ 15 MIN TIMER	COOK MODEL GC-186 OR APPROVED EQUAL	1, 2
EF-3	119 JANITOR	30	0.5	786	29.5 W	1.2	CEILING	DIRECT	120/1/60	OCC SENSOR W/ 15 MIN TIMER	COOK MODEL GC-166 OR APPROVED EQUAL	1, 2
EF-4	110 STAFF TOILET	50	0.5	726	47.5 W	1.5	CEILING	DIRECT	120/1/60	OCC SENSOR W/ 15 MIN TIMER	COOK MODEL GC-186 OR APPROVED EQUAL	1, 2

NOTES:
1. FAN SHALL HAVE W.B.E. GRILLE, BACKDRAFT DAMPER, S.S.S.C. AND MOUNTING BRACKERS.
2. MECHANICAL CONTRACTOR SHALL PROVIDE OCCUPANCY SENSOR WITH A 15 MIN TIMER. OCCUPANCY SENSOR SHALL BE INSTALLED BY ELECTRICAL CONTRACTOR

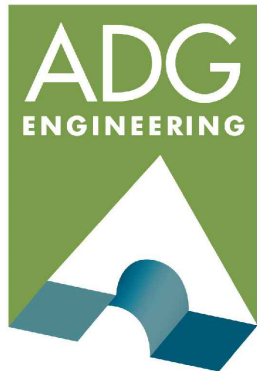
AIR BALANCE SCHEDULE (TOTAL BUILDING)					
ITEM	O.A.	R.A.	S.A.	E.A.	PRESSURE
EF-1	--	--	--	100	-100
EF-2	--	--	--	100	-100
EF-3	--	--	--	30	-30
EF-4	--	--	--	50	-50
AHU-1	180	1,220	1,400	--	180
AHU-2	190	1,410	1,600	--	190
AHU-3	205	1,745	1,950	--	205
TOTAL	575	4,375	4,950	280	295

AIR BALANCE SCHEDULE (LIBRARY)					
ITEM	O.A.	R.A.	S.A.	E.A.	PRESSURE
EF-4	--	--	--	50	-50
AHU-3	205	1,745	1,950	--	205
TOTAL	205	1,745	1,950	50	155

AIR BALANCE SCHEDULE (MEETING ROOM)					
ITEM	O.A.	R.A.	S.A.	E.A.	PRESSURE
EF-1	---	---	---	100	-100
EF-2	---	---	---	100	-100
EF-3	---	---	---	30	-30
AHU-1	180	1,220	1,400	--	180
AHU-2	190	1,410	1,600	--	190
TOTAL	370	2,630	3,000	230	140

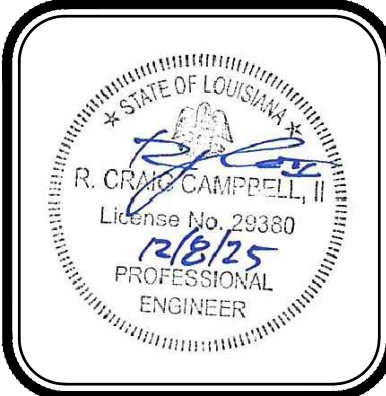
AIR COOLED CONDENSING UNIT SCHEDULE									
UNIT NO	SERVICE	BTUH COOLING OUTPUT	EVAP TEMP	AMBIENT TEMP	FULL LOAD AMPS	MCA	ELECTRIC SERVICE	REMARKS	NOTES
CU-1	AHU-1	42,000	40.0	95.0	12.8	15.9	208/3/60	TRANE MODEL 5TTA3042 OR APPROVED EQUAL	1
CU-2	AHU-2	48,000	40.0	95.0	13.3	16.3	208/3/60	TRANE MODEL 5TTA3048 OR APPROVED EQUAL	1
CU-3	AHU-3	60,000	40.0	95.0	17.0	21.1	208/3/60	TRANE MODEL 5TTA3060 OR APPROVED EQUAL	1

NOTES:
1. PROVIDE A IMC450A PLUS+ PROGRAMABLE THREE PHASE VOLTAGE MONITOR WITH 25 FAULT MEMORY ON ALL EQUIPMENT REQUIRING THREE PHASE ELECTRICAL.



ASSOCIATED DESIGN GROUP, INC.
3909 W Congress Street, Suite 101
Lafayette, Louisiana 70506
Phone: (337) 234-5710
Email: adginc@adginc.org

Project No. 25190



Project No.	0524
Drawn By:	LC
Approved By:	PP/CC
Preliminary Date:	08.08.2025
Release Date:	
File:	

WAYNE LAWRENCE COCO, AIA, ARCHITECT, L.L.C.

P.O. BOX 111 - 510 MAIN ST.
SIMMESPORT, LOUISIANA 71369
(318) 941-2392 / FAX (318) 941-2821

Coco & Company

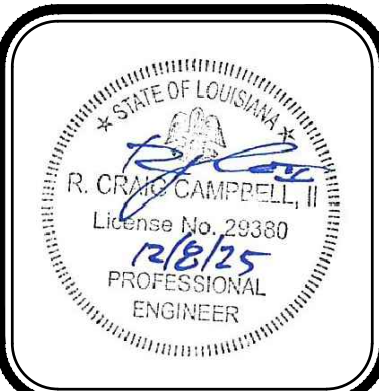
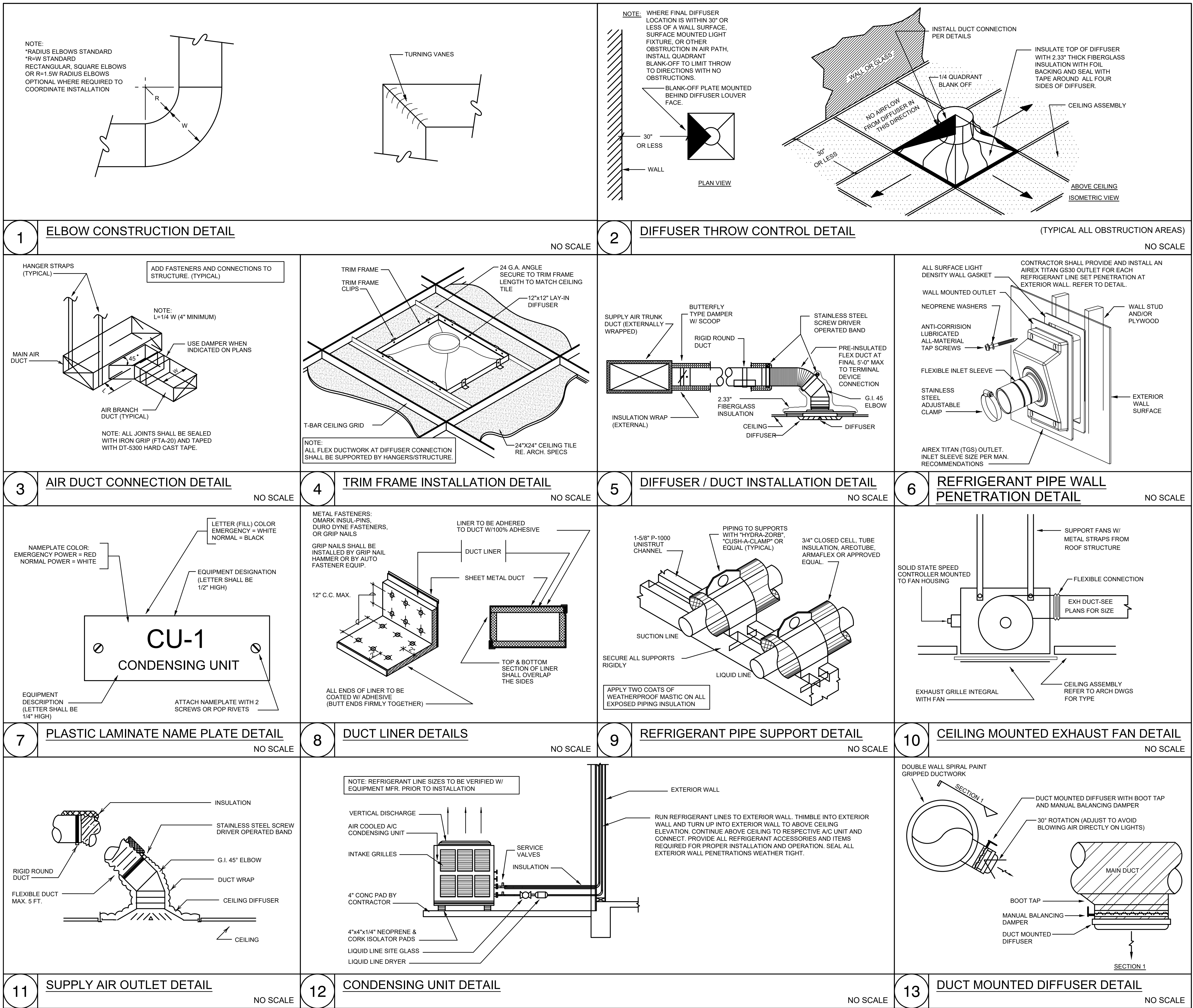
a professional architectural company

THE JOE WEBB MEMORIAL BRANCH LIBRARY

FOR

THE CLAIBORNE PARISH LIBRARY

HAYNESVILLE, LOUISIANA



Project No. 0524
Drawn By: LC
Approved By: P/CC
Preliminary Date: 08.08.2025
Release Date: File:

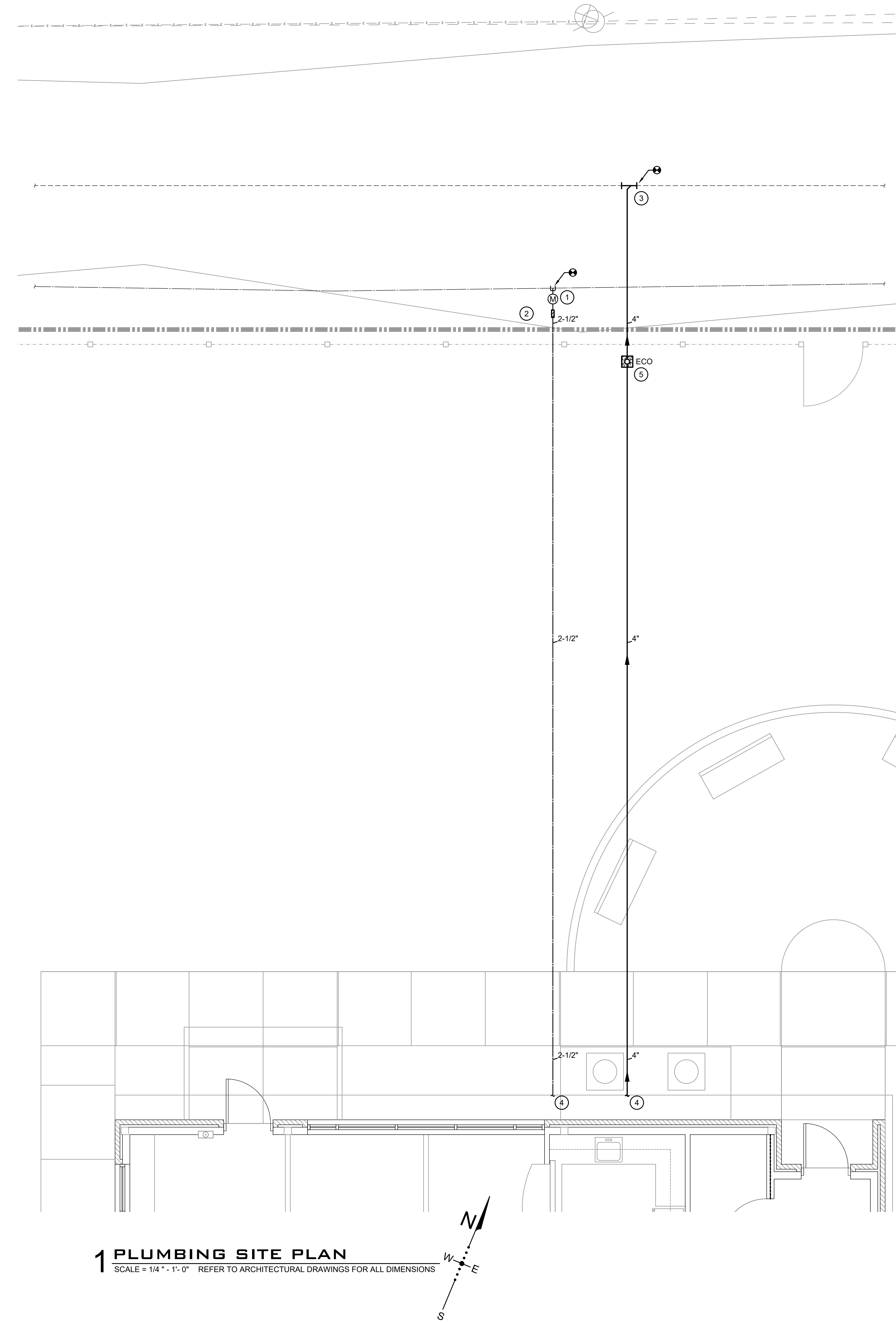
WAYNE LAWRENCE COCO, AIA, ARCHITECT, L.L.C.
P.O. BOX 111 - 510 MAIN ST.
SIMMESPORT, LOUISIANA 71369
(318) 941-2392 / FAX (318) 941-2821
Coco & Company
a professional architectural company

THE JOE WEBB MEMORIAL BRANCH LIBRARY
FOR
THE CLAIBORNE PARISH LIBRARY
HAYNESVILLE, LOUISIANA

ADG
ENGINEERING

ASSOCIATED DESIGN GROUP, INC.
3909 W Congress Street, Suite 201
Lafayette, Louisiana 70506
Phone: (337) 234-5710
Email: adginc@adginc.org

Project No. 25190



1 PLUMBING SITE PLAN
SCALE = 1/4" = 1'-0" REFER TO ARCHITECTURAL DRAWINGS FOR ALL DIMENSIONS

GENERAL PLUMBING NOTES:

- A. ALL WORK SHALL BE IN ACCORDANCE WITH APPLICABLE LOCAL, STATE, AND FEDERAL CODES (INCLUDING INTERNATIONAL PLUMBING CODE, INTERNATIONAL BUILDING CODE, INTERNATIONAL FUEL GAS CODE, NFPA, ETC.) AND APPLICABLE DEQ AND DHHOP REGULATIONS TO THE SATISFACTION OF THE AUTHORITIES HAVING JURISDICTION. CONTRACTOR SHALL OBTAIN REQUIRED PERMITS AND APPROPRIATE WORK AUTHORIZATION PRIOR TO BEGINNING WORK.
- B. CONTRACTOR SHALL VERIFY EXACT LOCATION OF UTILITIES, INVERT ELEVATIONS, ETC. PRIOR TO BEGINNING ANY ROUGH-IN OF SUBSURFACE WORK. COORDINATE ALL UTILITY TIE-IN REQUIREMENTS WITH RESPECTIVE UTILITIES.
- C. REFER TO ARCHITECTURAL DRAWINGS FOR ALL DIMENSIONS, DETAILS, ETC. INSTALL WORK TO CONFORM TO ARCHITECTURAL AND STRUCTURAL DRAWINGS AS REQUIRED.
- D. CONTRACTOR SHALL RUN ALL NEW UTILITIES (WATER, SEWER, ETC.) AROUND NEW CONSTRUCTION AREA AS INDICATED PRIOR TO SHUTTING DOWN OR TIE-ING INTO ANY SYSTEMS. COORDINATE ALL UTILITY SERVICE DISRUPTIONS TO OTHER UTILITY CUSTOMERS WITH RESPECTIVE UTILITY. ALL UTILITY RELOCATION (SUCH AS WATER) SHALL BE DONE IN STRICT COMPLIANCE WITH UTILITY COMPANY STANDARDS AND REQUIREMENTS. CONTACT UTILITY COMPANY AND VERIFY AND (DOCUMENT) REQUIREMENTS, COST, CHARGES, ETC.. CONTRACTOR SHALL FULLY COMPLY WITH ALL UTILITY COMPANY REQUIREMENTS.
- E. COORDINATE ALL WORK THROUGH GENERAL CONTRACTOR. COORDINATE CUTTING, PATCHING, TRENCHING WORK WITH SITE GRADING/PAVING PLAN.
- F. UNDERGROUND UTILITIES ARE APPROXIMATE. VERIFY INVERTS AND EXACT LOCATIONS WITH UTILITY PERSONNEL. VERIFY ALL EASEMENTS WITH APPROPRIATE PARTIES. ADJUST ALL UTILITY LINES ACCORDINGLY.
- G. COORDINATE INSTALLATION OF ALL PLUMBING, PIPING, ETC. WITH STRUCTURE.
- H. ALL DOMESTIC WATER BRANCH LINES SHALL HAVE VALVES AT MAINLINES.
- I. CONTRACTOR SHALL VISIT SITE PRIOR TO BID TO VERIFY UTILITY TIE-IN LOCATIONS.
- N. REVIEW COMPLETE SET OF CONTRACT DOCUMENTS PRIOR TO SUBMITTING BID.

PLUMBING KEYNOTES:

- ① CONNECT TO EXISTING WATER SERVICE IN THIS VICINITY. PROVIDE NEW POTABLE WATER SERVICE WITH SERVICE TAP AND METER BY LOCAL WATER UTILITY COMPANY (66 GPM DEMAND). VERIFY EXACT TIE-IN LOCATION PRIOR TO ANY ROUGH-INS. CONTRACTOR SHALL CONTACT LOCAL WATER DEPARTMENT AND PAY ALL SERVICE AND CONNECTION CHARGES INCLUDING WATER METER, SERVICE LINE FROM CITY TO METER, BORING, ETC. AS REQUIRED.
- ② PROVIDE AND INSTALL A 2-1/2" WATTS LF009 REDUCE PRESSURE ZONE BACKFLOW PREVENTER WITH STRAINER AND SHUT-OFF VALVE IN THIS VICINITY AS PER LOCAL CODES. BACKFLOW PREVENTER SHALL HAVE BRONZE STRAINER, STAINLESS STEEL CHECK SEATS, BALL TYPE CUTOFF VALVES, SPRING LOADED "Y" PATTERN CHECK VALVES, RELIEF VALVE, TEST COCKS, AND SHALL CONFORM TO ALL CODES. PROVIDE A HOT BOX MODEL HB2ST OR APPROVED EQUIVALENT FIBERGLASS ENCLOSURE OVER BACKFLOW PREVENTER. UNIT SHALL HAVE A 90 WATT HEATER WITH THERMOSTAT AT 120/1/60 ELECTRICAL SERVICE, HINGE TOP, DECK DRAINS, AND HASP FOR LOCK. INSTALL AS PER LOCAL AND STATE CODES. COORDINATE COLOR AND LOCATION OF HOT BOX WITH ARCHITECT. CONTRACTOR SHALL PROVIDE CONCRETE PAD FOR ANCHOR INSTALLATION.
- ③ CONNECT TO EXISTING SANITARY SEWER LINE IN THIS VICINITY. VERIFY EXACT TIE-IN LOCATION, SIZE, FLOW DIRECTION, AND INVERT PRIOR TO ANY ROUGH-INS.
- ④ REFER TO P2.1 PLUMBING PLAN FOR CONTINUATION.
- ⑤ INSTALL EXTERIOR CLEANOUT IN THIS VICINITY. COORDINATE FINAL LOCATION WITH ARCHITECT PRIOR TO ROUGH IN.



ASSOCIATED DESIGN GROUP, INC.
3909 W Congress Street, Suite 201
Lafayette, Louisiana 70506
Phone: (337) 234-5710
Email: adginc@adginc.org

Project No. 25190



Project No.	0524
Drawn By:	LC
Approved By:	PP/CC
Preliminary Date:	08.08.2025
Release Date:	
File:	

WAYNE LAWRENCE COCO, AIA, ARCHITECT, L.L.C.

P.O. BOX 111 - 510 MAIN ST.
SIMMESPORT, LOUISIANA 71369
(318) 941-2392 / FAX (318) 941-2821

Coco & Company



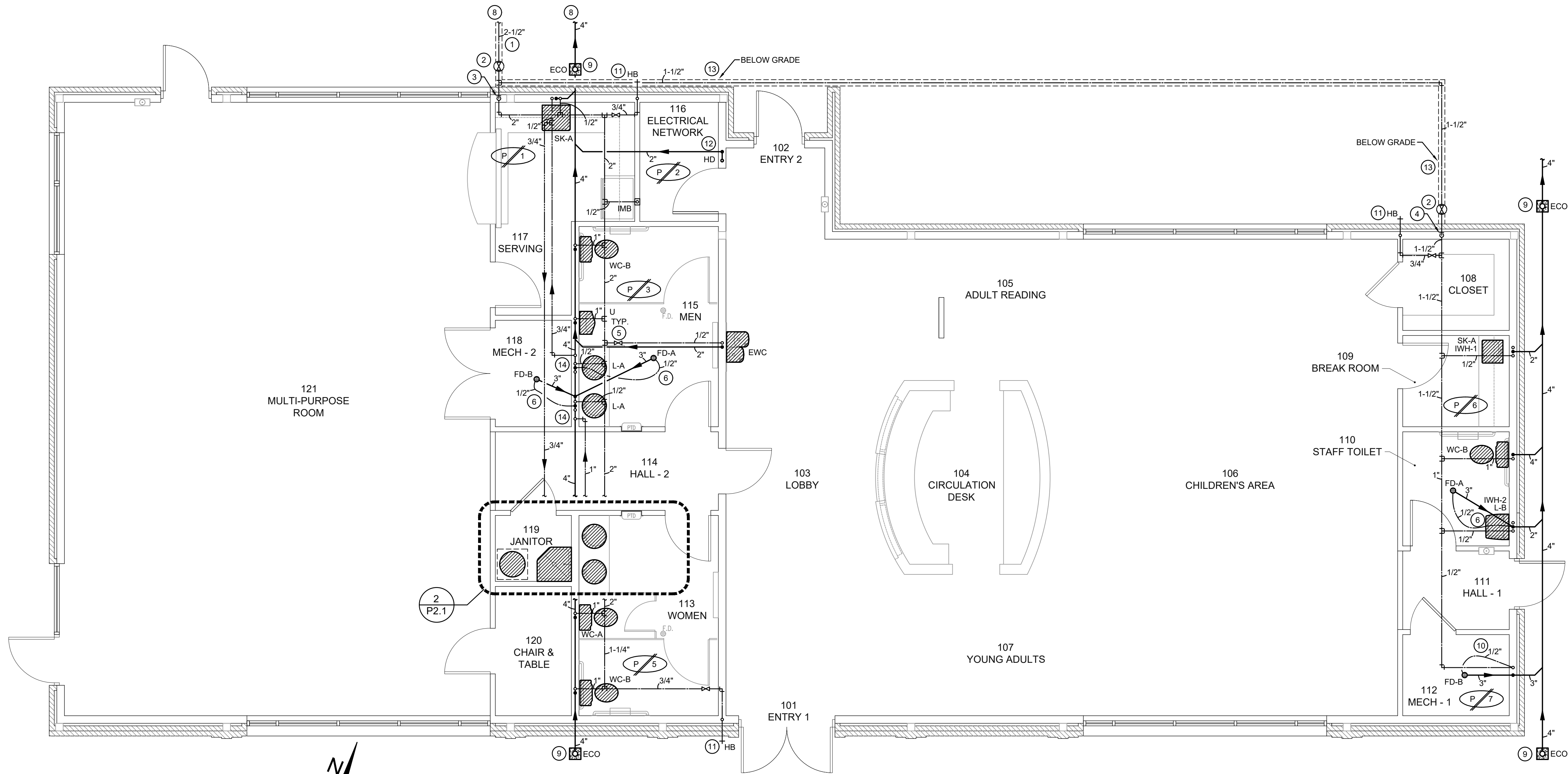
a professional architectural company

THE JOE WEBB MEMORIAL BRANCH LIBRARY
FOR
THE CLAIBORNE PARISH LIBRARY
HAYNESVILLE, LOUISIANA

Sheet Number:

P1.1

22 of 32



1 PLUMBING PLAN

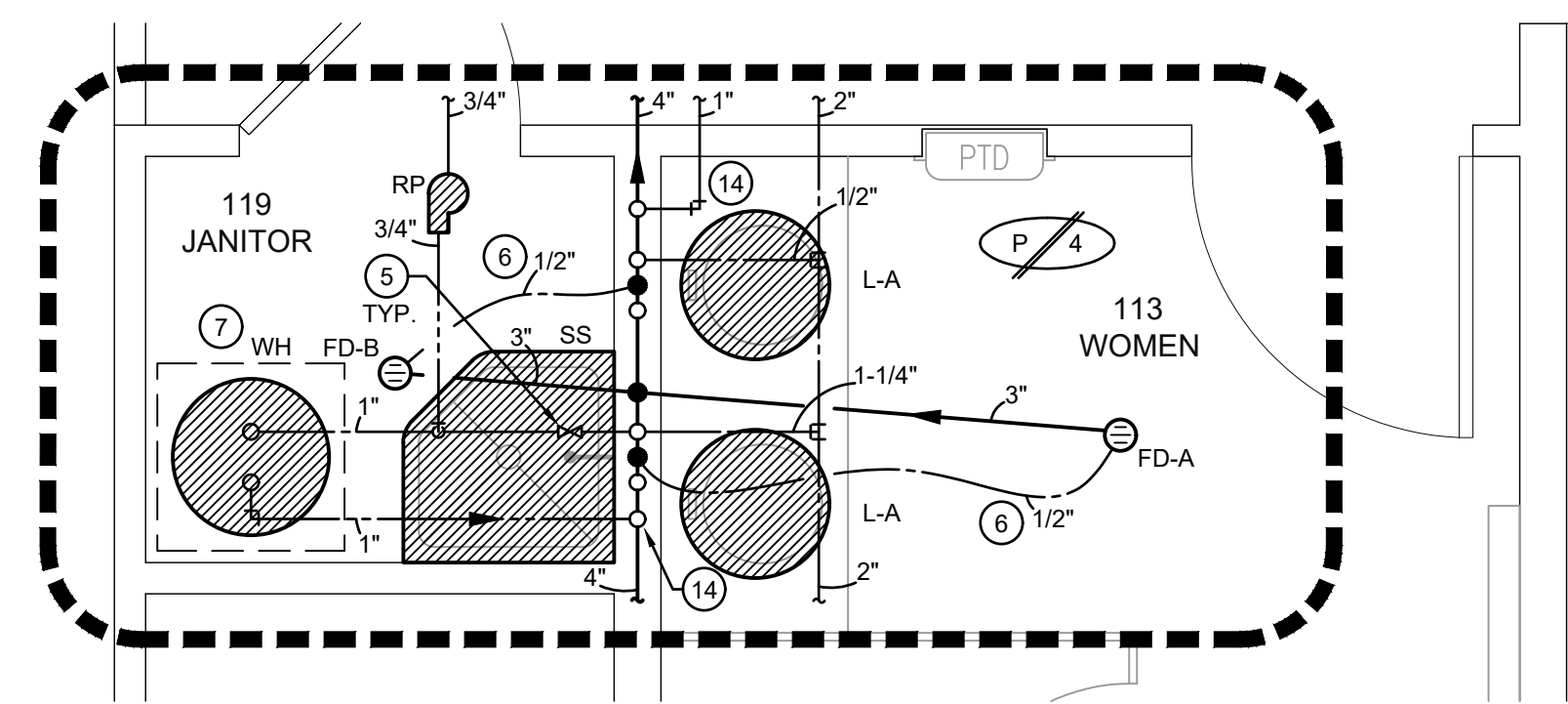
SCALE = 1/4" = 1'-0" REFER TO ARCHITECTURAL DRAWINGS FOR ALL DIMENSIONS

GENERAL PLUMBING NOTES:

- ALL WORK SHALL BE IN ACCORDANCE WITH APPLICABLE LOCAL, STATE, AND FEDERAL CODES (INCLUDING INTERNATIONAL PLUMBING CODE, INTERNATIONAL BUILDING CODE, INTERNATIONAL FUEL GAS CODE, NFPA, ETC.) AND APPLICABLE DEQ AND DHOP REGULATIONS TO THE SATISFACTION OF THE AUTHORITIES HAVING JURISDICTION. CONTRACTOR SHALL OBTAIN REQUIRED PERMITS AND APPROPRIATE WORK AUTHORIZATION PRIOR TO BEGINNING WORK.
- CONTRACTOR SHALL VERIFY EXACT LOCATION OF UTILITIES, INVERT ELEVATIONS, ETC. PRIOR TO BEGINNING ANY ROUGH-IN OF SUBSURFACE WORK. COORDINATE ALL UTILITY TIE-IN REQUIREMENTS WITH RESPECTIVE UTILITIES.
- REFER TO ARCHITECTURAL DRAWINGS FOR ALL DIMENSIONS, DETAILS, ETC. INSTALL WORK TO CONFORM TO ARCHITECTURAL AND STRUCTURAL DRAWINGS AS REQUIRED.
- CONTRACTOR SHALL RUN ALL NEW UTILITIES (WATER, SEWER, ETC.) AROUND NEW CONSTRUCTION AREA AS INDICATED PRIOR TO SHUTTING DOWN OR TIE-ING INTO ANY SYSTEMS. COORDINATE ALL UTILITY SERVICE DISRUPTIONS TO OTHER UTILITY CUSTOMERS WITH RESPECTIVE UTILITY. ALL UTILITY RELOCATION (SUCH AS WATER) SHALL BE DONE IN STRICT COMPLIANCE WITH UTILITY COMPANY STANDARDS AND REQUIREMENTS. CONTACT UTILITY COMPANY AND VERIFY AND (DOCUMENT) REQUIREMENTS, COST, CHARGES, ETC.. CONTRACTOR SHALL FULLY COMPLY WITH ALL UTILITY COMPANY REQUIREMENTS.
- COORDINATE ALL WORK THROUGH GENERAL CONTRACTOR. COORDINATE CUTTING, PATCHING, TRENCHING WORK WITH SITE GRADING/PAVING PLAN.
- UNDERGROUND UTILITIES ARE APPROXIMATE. VERIFY INVERTS AND EXACT LOCATIONS WITH UTILITY PERSONNEL. VERIFY ALL EASEMENTS WITH APPROPRIATE PARTIES. ADJUST ALL UTILITY LINES ACCORDINGLY.
- COORDINATE INSTALLATION OF ALL PLUMBING, PIPING, ETC. WITH STRUCTURE.
- ALL DOMESTIC WATER BRANCH LINES SHALL HAVE VALVES AT MAINLINES.
- CONTRACTOR SHALL VISIT SITE PRIOR TO BID TO VERIFY UTILITY TIE-IN LOCATIONS.
- REVIEW COMPLETE SET OF CONTRACT DOCUMENTS PRIOR TO SUBMITTING BID.

PLUMBING KEYNOTES:

- RUN 2-1/2" DOMESTIC COLD WATER LINE TO SERVE NEW BUILDING.
- PROVIDE POTABLE WATER MAIN SHUT-OFF VALVE IN A CAST IRON VALVE BOX WITH METAL COVER MARKED "WATER". REFER TO DETAIL.
- RUN 2" DOMESTIC COLD WATER LINE UP FROM BELOW GRADE. CONTINUE UP IN WALL TO ABOVE CEILING APPROXIMATELY WHERE SHOWN.
- RUN 1-1/2" DOMESTIC COLD WATER LINE UP FROM BELOW GRADE. CONTINUE UP IN WALL TO ABOVE CEILING APPROXIMATELY WHERE SHOWN.
- PROVIDE A BALL TYPE CUTOFF VALVE ABOVE ACCESSIBLE CEILING FOR ISOLATION. (TYPICAL)
- TAP OFF LAVATORY P-TRAP WITH 1/2" CHROME LINE TO WALL AND CONTINUE IN WALL WITH 1/2" SOFT COPPER LINE TO BELOW GRADE TO TRAP PRIMER CONNECTION ON FLOOR DRAIN. ALL EXPOSED SUPPLY LINES SHALL BE CHROME (J.R. SMITH 2698 OR APPROVED EQUIVALENT P-TRAP TYPE).
- WATER HEATER ON STAND (STAND BY GENERAL CONTRACTOR) IN ROOM. PIPE T&P RELIEF LINE AND EMERGENCY DRAIN PAN LINE FULL SIZE FROM WATER HEATER TO FLOOR DRAIN WITH 2" AIR GAP.
- REFER TO P1.1 PLUMBING SITE PLAN FOR CONTINUATION.
- INSTALL EXTERIOR CLEANOUT IN THIS VICINITY. COORDINATE FINAL LOCATION WITH ARCHITECT PRIOR TO ROUGH IN.
- ROUTE 1/2" DOMESTIC COLD WATER LINE AT MAXIMUM HEIGHT TO PRIMER VALVE (PPP P2-500) AND DROP IN WALL. CONTINUE IN WALL WITH 1/2" SOFT COPPER LINE TO BELOW GRADE TO TRAP PRIMER CONNECTION ON FLOOR DRAIN.
- 3/4" DOMESTIC COLD WATER LINE DOWN AND OUT TO HOSE BIBB. PROVIDE BALL TYPE CUTOFF VALVE IN ACCESSIBLE LOCATION.
- INSTALL CONCEALED 2" INSULATED HUB DRAIN IN WALL FOR MSAC UNIT CONDENSATE DRAIN LINE. RUN INSULATED DRAIN LINE TO HUB DRAIN WITH 2" AIR GAP. INSULATE DRAIN LINE DOWN TO BELOW GRADE WITH 2" THICK FIBERGLASS INSULATION WITH FOIL BACKING. TAPE ALL JOINTS. COORDINATE LOCATION WITH MECHANICAL CONTRACTOR PRIOR TO ANY ROUGH-INS. PROVIDE A MINIMUM 16"x16" ACCESS PANEL IN WALL. PRIME AND PAINT ACCESS PANEL TO MATCH NEW WALL.
- RUN 1-1/2" DOMESTIC COLD WATER LINE BELOW GRADE IN THIS VICINITY.
- DOMESTIC HOT WATER LINE SHALL DROP IN CHASE AND RUN HORIZONTALLY SO THAT HOT WATER LINE IS WITHIN 2' OF PUBLIC LAVATORY ANGLE STOP CONNECTION. REFER TO DETAIL.



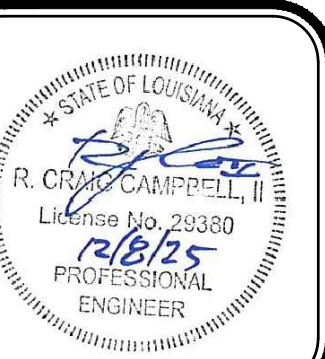
2 PLUMBING ENLARGED PLAN

SCALE = 1/2" = 1'-0" REFER TO ARCHITECTURAL DRAWINGS FOR ALL DIMENSIONS



ASSOCIATED DESIGN GROUP, INC.
3909 W Congress Street, Suite 201
Lafayette, Louisiana 70506
Phone: (337) 234-5710
Email: adginc@adginc.org

Project No. 25190



Project No. 0524
Drawn By: LC
Approved By: P/CC
Preliminary Date: 08.08.2025
Release Date: File:

WAYNE LAWRENCE COCO, AIA, ARCHITECT, L.L.C.
Coco & Company
P.O. BOX 111 - 510 MAIN ST.
SIMMESPORT, LOUISIANA 71369
(318) 941-2392 / FAX (318) 941-2821
a professional architectural company

THE JOE WEBB MEMORIAL BRANCH LIBRARY
FOR
THE CLAIBORNE PARISH LIBRARY
HAYNESVILLE, LOUISIANA

Sheet Number:
P2.1
23 of 32

PLUMBING SCHEDULE							
MARK DESCRIPTION	MANUFACTURER	SERVICES					REMARKS
		TRAP	WASTE	VENT	HW	CW	
WC-A WATER CLOSET FLOOR MOUNTED	ZURN	INT.	4"	3"	—	1"	ZURN Z5655-BWL1: 15" HIGH, WHITE, VITREOUS CHINA, 1.6 GPF [4.2 LPF] HIGH EFFICIENCY FLOOR MOUNTED BOTTOM OUTLET TOILET WITH SIPHON JET FLUSHING ACTION, ELONGATED FRONT RIM WITH 1-1/2" TOP SPUD. PROVIDE ZURN Z5950 WHITE, OPEN FRONT SEAT/LESS COVER, WITH STAINLESS STEEL CHECK HINGE, AND ZURN Z6000AV EXPOSED FLUSH VALVE.
WC-B WATER CLOSET ADA FLOOR MOUNTED	ZURN	INT.	4"	3"	—	1"	ZURN Z5665-BWL1: 17" HIGH, WHITE, VITREOUS CHINA, 1.6 GPF [4.2 LPF] HIGH EFFICIENCY FLOOR MOUNTED BOTTOM OUTLET TOILET WITH SIPHON JET FLUSHING ACTION, ELONGATED FRONT RIM WITH 1-1/2" TOP SPUD. PROVIDE ZURN Z5950 WHITE, OPEN FRONT SEATLESS COVER, WITH STAINLESS STEEL CHECK HINGE, AND ZURN Z6000AV EXPOSED FLUSH VALVE. INSTALL AS PER ADA REQUIREMENTS. INSTALL FLUSH HANDLE ON WIDE SIDE OF STALL.
U URINAL	ZURN	INT.	2"	2"	—	1"	ZURN Z5755: WHITE, VITREOUS CHINA, SIPHON JET ACTION URINAL W/ 3/4" TOP SPUD. ZURNZ6003AV 1.0 GALLON EXPOSED FLUSH VALVE WITH VACUUM BREAKER AND STOP. COORDINATE MOUNTING HEIGHT WITH ARCHITECTURAL DRAWINGS. PROVIDE FLOOR MOUNTED CARRIER.
L-A LAVATORY COUNTER ADA	ZURN TRUEBRO	—	2"	2"	1/2"	1/2"	ZURN Z5111: WHITE VITREOUS CHINA COUNTERTOP LAVATORY WITH SINGLE HOLE, ZURN Z86100-XL POLISHED CHROME-PLATED SINGLE LAVATORY SLOW CLOSING, VANDLE RESISTANT, ADA COMPLIANT, ADJUSTABLE CYCLE TIMER METERING FACUET WITH .5 GPM LAMINAR FLOW AERATOR AND ZURN Z8743-PC SOID TOP OPEN-GRID DRAIN, 1-1/4" 17 GA. CAST BRASS P-TRAP WITH CLEANOUT PLUG, 3/8" ANGLE SUPPLY WITH STOP. COVER P-TRAP, COLD & HOT WATER SUPPLIES WITH TRUEBRO 102 LAVGUARD. PROVIDE ASSE 1070 THERMOSTATIC MIXING VALVE MOUNTED ON WALL UNDER LAVATORY.
L-B LAVATORY WALL HUNG ADA	ZURN TRUEBRO	1-1/4"	2"	2"	1/2"	1/2"	ZURN Z5341: WHITE VITREOUS CHINA WALL HUNG LAVATORY WITH SINGLE 4" CENTER, ZURN Z86100-XL (1.0 GPM) AND ZURN Z8743-PC SOLID TOP OPEN-GRID DRAIN, 1-1/4" 17 GA. CAST BRASS P-TRAP WITH CLEANOUT PLUG, 3/8" ANGLE SUPPLY WITH STOP. PROVIDE CONCEALED ARM FLOOR MOUNTED CARRIER. COVER P-TRAP, COLD & HOT WATER SUPPLIES WITH TRUEBRO 201 LAVSHIELD. PROVIDE ASSE 1070 THERMOSTATIC MIXING VALVE MOUNTED ON WALL UNDER LAVATORY.
SK-A SINK SINGLE COMPARTMENT DROP-IN	ELKAY ZURN TRUEBRO	1-1/2"	2"	2"	1/2"	1/2"	ELKAY - LRAD1919: 18 GA. TYPE 302 SS SINGLE COMPARTMENT SINK 19-1/2"x19"x8" DEEP, ZURN Z831B4-XL WIDESPREAD GOOSENECK FAUCET WITH QUARTER-TURN CERAMIC DISC VALVES, 4" WRIST BLADE HANDLES, ZSS250W-PC DRAIN WITH STRAINER, WITH CAST BRASS CONTINUOUS WASTE AND P-TRAP, ANGLE SUPPLIES WITH STOPS. INSULATE WASTE, HOT AND COLD WATER SUPPLIES WITH TRUEBRO 102 LAVGUARD. PROVIDE WATTS LFUSG-B-M2 THERMOSTATIC MIXING VALVE UNDER SINK.
EWC ELECTRIC WATER COOLER B/LEVEL BOTTLE FILLING	ELKAY	—	2"	2"	3/4"	3/4"	ELKAY - EZSTL8WSLK: BARRIER-FREE HI-LO WATER COOLER WITH BOTTLE FILLER, WALL HUNG, STAINLESS STEEL FINISH, 8.0 GPH OF 50 DEGREE OUTLET WATER, 80 DEGREE INLET WATER WITH 90 DEGREE AMBIENT, 1/5 HP, 120 VOLT. MOUNT TO COMPLY WITH ADA REQUIREMENTS AND ARCHITECTURAL DRAWINGS. PROVIDE ADA APRON. PROVIDE P-TRAP AND ANGLE SUPPLY WITH STOP. COORDINATE HI/LOW ORIENTATION WITH ARCHITECT PRIOR TO ORDERING.
SS SERVICE SINK	ZURN	—	3"	2"	3/4"	3/4"	ZURN Z5850: 28"x28" CUSTODIAL CORNER FLOOR SINK, ZURN Z843M1 FAUCET CHROME PLATED WITH VACUUM BREAKER, INTEGRAL STOPS, ADJUSTABLE WALL BRACE, PAIL HOOK, 3/4" HOSE THREAD ON SPOUT, HOSE AND HOSE BRACKET, MOP HANGER AND STAINLESS WALL GUARD.
HB HOSE BIBB	WOODFORD	—	—	—	—	3/4"	WOODFORD B65: 3/4" FREEZELESS WALL HYDRANT IN FLUSH MOUNTED LOCKING RECESS WALL BOX WITH INTEGRAL DRAIN, VACUUM BREAKER AND TEE KEY IN POLISHED BRASS FINISH. VERIFY WALL THICKNESS.
IMB ICE MAKER BOX	GUY GRAY	—	—	—	—	1/2"	GUY GRAY BIM875: PROVIDE 3/8" ANGLE SUPPLY WITH STOP IN 20 GA. METAL RECESSED BOX MOUNTED FLUSH. COORDINATE MOUNTING HEIGHT WITH ARCHITECT PRIOR TO ROUGH-IN.
FD-A FLOOR DRAIN	ZURN	—	LINE SIZE	—	—	—	ZURN ZM415S: CAST IRON FLOOR DRAIN WITH INTEGRAL CLAMPING COLLAR, SEEPAGE OPENING, ADJUSTABLE 6"x6" NICKEL BRONZE STRAINER W/ SQUARE HEEL PROOF PERFORATIONS, AND P-TRAP. PROVIDE TRAP PRIMER CONNECTION. FLOOR DRAIN GRATE SHALL BE SQUARE. COORDINATE POSITION OF GRATE WITH ARCHITECT.
FD-B FLOOR DRAIN RECESSED	ZURN	—	LINE SIZE	—	—	—	ZURN Z415I: CAST IRON FLOOR DRAIN W/ RAISED FLANGE, INTEGRAL CLAMPING COLLAR, SEEPAGE OPENING, ADJUSTABLE 7-3/8" DIA. NICKEL BRONZE STRAINER W/ SQUARE PERFORATIONS, P-TRAP. PROVIDE TRAP PRIMER CONNECTION.
HD HUB DRAIN	—	2"	2"	2"	—	—	HUB DRAIN SHALL BE CONSTRUCTED AS PER DETAIL.
ECO EXTERIOR CLEANOUT	JONES STEPHENS	—	LINE SIZE	—	—	—	JONES STEPHENS S36-008: CAST IRON FRAME AND COVER MARKED "SEWER CLEANOUT". PROVIDE AS DETAILED IN CONCRETE SLAB.
WCO WALL CLEANOUT	ZURN	—	LINE SIZE	—	—	—	ZURN Z1446: CAST IRON CLEANOUT TEE WITH BRASS PLUG AND SECURED STAINLESS STEEL ACCESS COVER.

APPROVED EQUALS: THE FOLLOWING MANUFACTURERS OF PLUMBING FIXTURES AND DRAINS OF COMPARABLE QUALITY TO THOSE ITEMS SPECIFIED ARE CONSIDERED APPROVED EQUALS SUBJECT TO COMPLIANCE WITH REQUIREMENTS OF THE INDIVIDUAL SPECIFICATIONS.

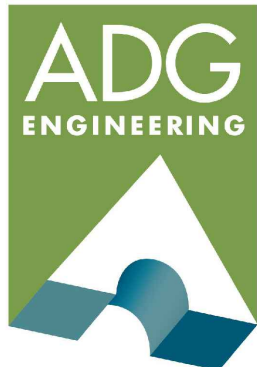
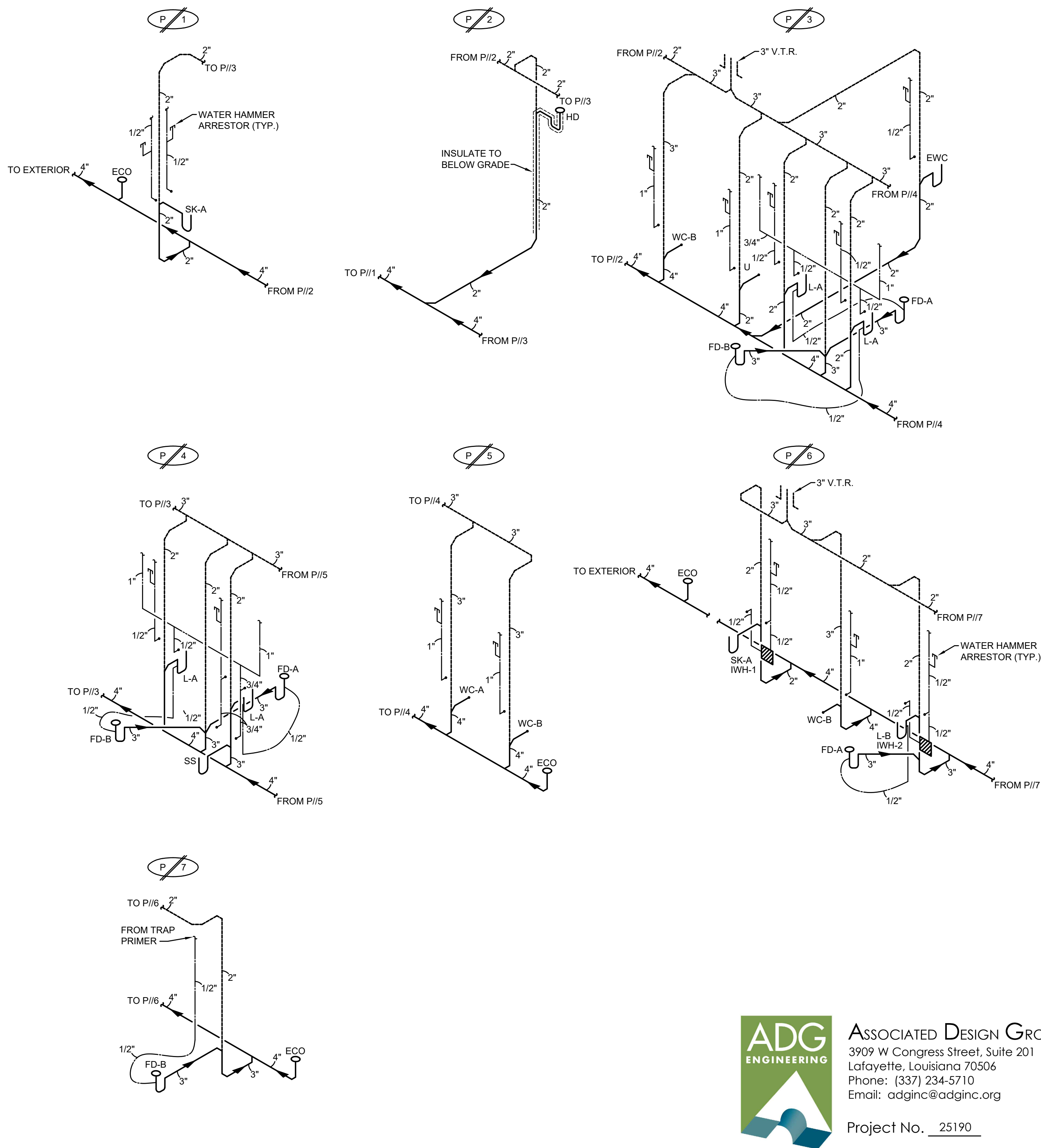
PLUMBING FIXTURES:	AMERICAN STANDARD, MANSFIELD, SLOAN, TOTO, ZURN
DRAINS, CLEANOUTS, CARRIERS:	JOSAM, J.R. SMITH, MIFAB, WATTS, ZURN
SINKS:	ADVANCE TABCO, GRIFFIN, JUST
SERVICE SINKS:	ACORN, FLORSTONE, MUSTEE, STERN WILLIAMS, ZURN
FLUSH VALVES:	ZURN
TEMPERING VALVES:	ACORN, BRADLEY, LAWLER, POWERS
FAUCETS:	CHICAGO, DELTA COMMERCIAL, MOEN COMMERCIAL, SLOAN, SPEAKMAN, T & S, ZURN
ELECTRIC WATER COOLER:	ACORN, HAWIS, HALSEY TAYLOR, OASIS
TOIET SEATS:	BEMIS, BENEKE, CENTOCO, ZURN
EXPANSION TANK:	ELBI, WESSELS, WILKINS,
SUPPLIES:	BRASSCRAFT, EASTMAN, MCGUIRE, SPECIFIED TRIM, ZURN
OTHER MANUFACTURERS:	SUBMIT FOR PRIOR APPROVAL.

ELECTRIC WATER HEATER SCHEDULE							
UNIT NO	LOCATION	STORAGE GAL	HEATING ELEMENTS KW	RECOVERY (USGPH @ 80°F RISE)	FULL LOAD AMPS (FLA)	ELECTRICAL SERVICE	REMARKS
WH	119 JANITOR	30	6	42	28.8	208/1/60	A.O. SMITH DSE-30A OR APPROVED EQUAL

RE-CIRCULATION PUMP SCHEDULE								
UNIT NO	SERVICE	WATER TEMP	TOTAL GPM	HEAD FT H2O	MOTOR HP	CONTROL	ELECTRICAL SERVICE	REMARKS
RP	WH	120	1	18	1/25	AQUASTAT	120/1/60	GRUNDFOS UP SERIES OR APPROVED EQUAL

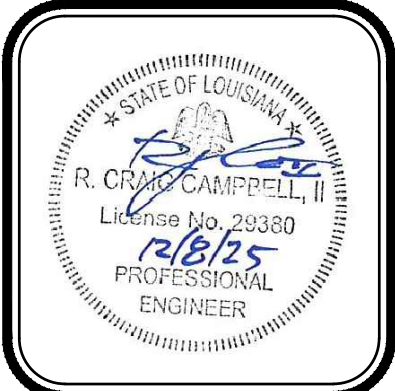
ELECTRIC INSTANTANEOUS WATER HEATER SCHEDULE					
UNIT NO	LOCATION	HEATING ELEMENTS KW	ELECTRICAL SERVICE	REMARKS	NOTES
IWH-1	109 BREAK ROOM	8.3 KW	208/1/60	EEMAX SPEX8208 OR APPROVED EQUAL	1
IWH-2	110 STAFF TOILET	3.2 KW	208/1/60	EEMAX SPEX3208 OR APPROVED EQUAL	1

NOTES:
1. INSTALL WATER HEATER ON WALL, CONCEAL WITH TRUEBRO LAV SHIELD



ASSOCIATED DESIGN GROUP, INC.
3909 W Congress Street, Suite 101
Lafayette, Louisiana 70506
Phone: (337) 234-5710
Email: adginc@adginc.org

Project No. 25190



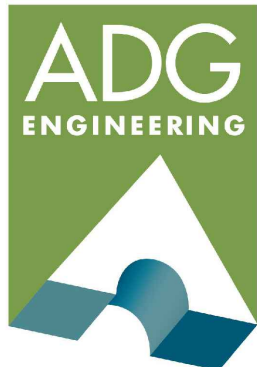
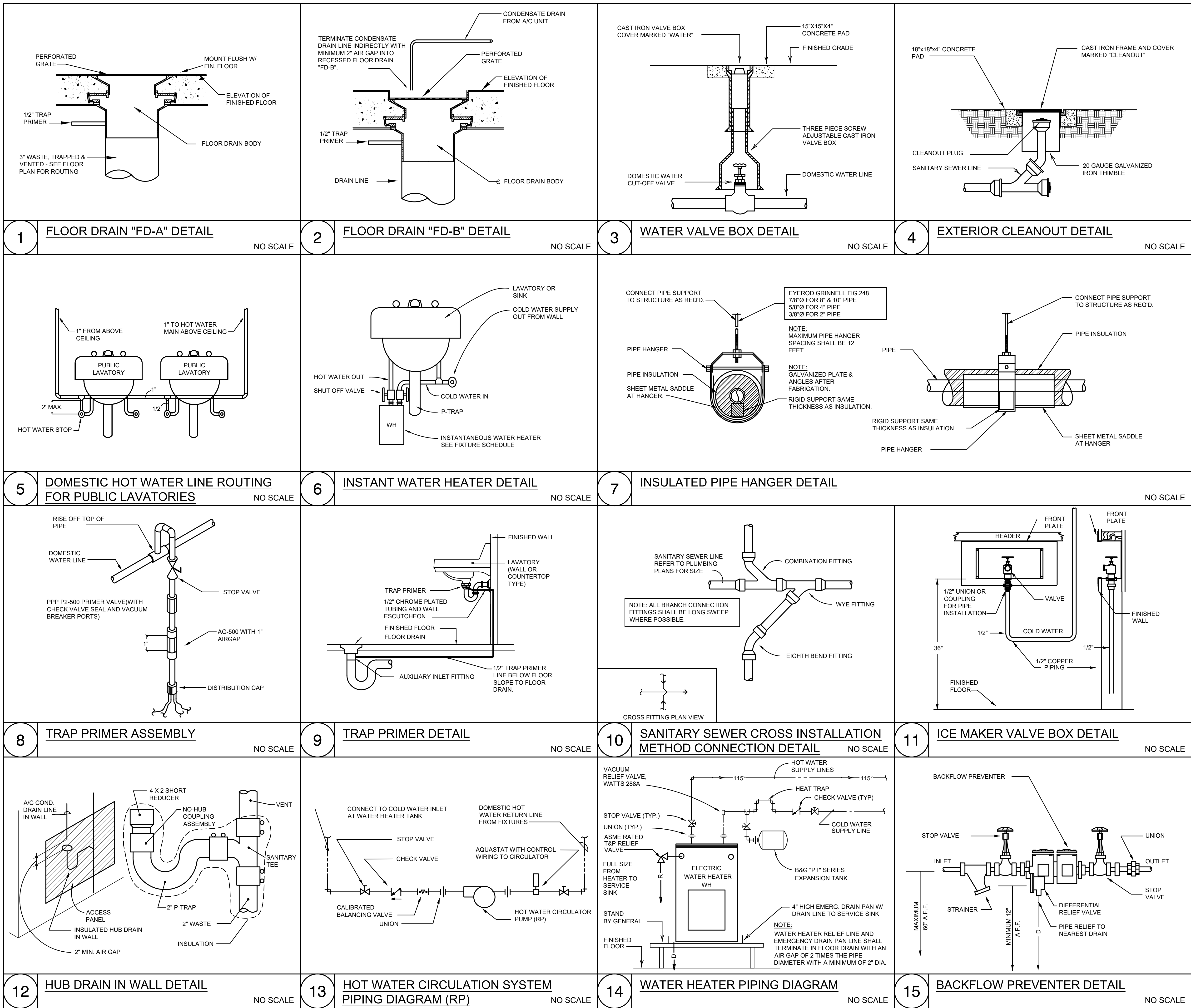
Project No. 0524
Drawn By: LC
Approved By: P/CC
Preliminary Date: 08.08.2025
Release Date: File:

WAYNE LAWRENCE COCO, AIA, ARCHITECT, L.L.C.
P.O. BOX 111 - 510 MAIN ST.
SIMMESPORT, LOUISIANA 71369
(318) 941-2392 / FAX (318) 941-2821
Coco & Company
a professional architectural company

THE JOE WEBB MEMORIAL BRANCH LIBRARY
FOR
THE CLAIBORNE PARISH LIBRARY
HAYNESVILLE, LOUISIANA

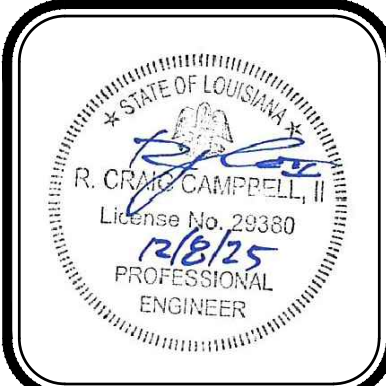
Sheet Number:

P3.1
24 of 32



ASSOCIATED DESIGN GROUP, INC.
3909 W Congress Street, Suite 201
Lafayette, Louisiana 70506
Phone: (337) 234-5710
Email: adginc@adginc.org

Project No. 25190

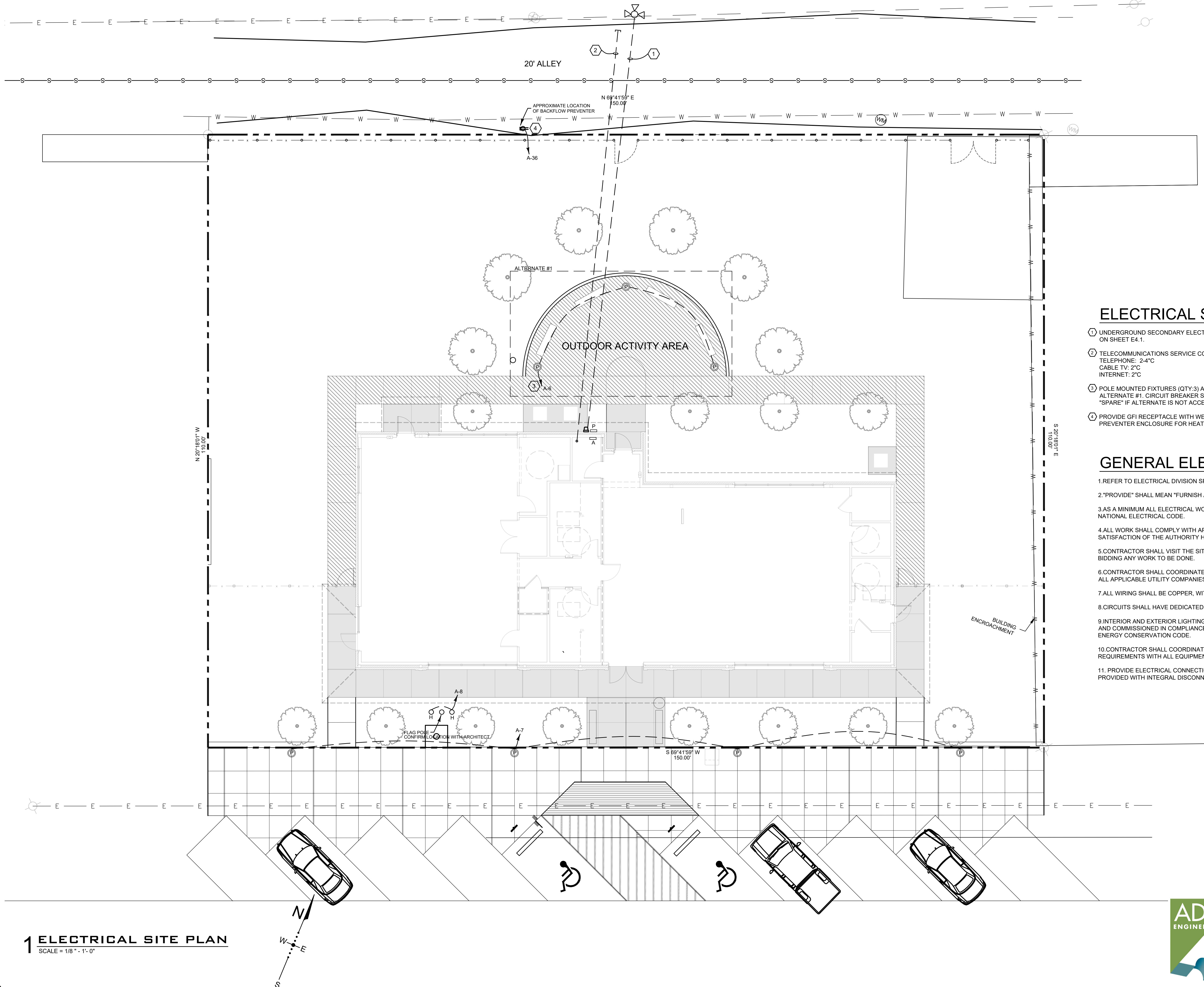


Project No. 0524
Drawn By: LC
Approved By: P/CC
Preliminary Date: 08.08.2025
Release Date: File:

WAYNE LAWRENCE COCO, AIA, ARCHITECT, L.L.C.
P.O. BOX 111 - 510 MAIN ST.
SIMMESPORT, LOUISIANA 71369
(318) 941-2392 / FAX (318) 941-2821
Coco & Company
a professional architectural company

THE JOE WEBB MEMORIAL BRANCH LIBRARY
FOR
THE CLAIBORNE PARISH LIBRARY
HAYNESVILLE, LOUISIANA

Sheet Number:
P4.1
25 of 32



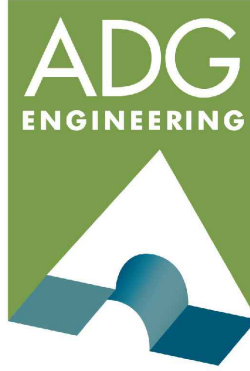
1 ELECTRICAL SITE PLAN
SCALE = 1/8" = 1'-0"

ELECTRICAL SITE KEYNOTES:

1. UNDERGROUND SECONDARY ELECTRICAL SERVICE. REFER TO ELECTRICAL RISER DIAGRAM ON SHEET E4.1.
2. TELECOMMUNICATIONS SERVICE CONDUITS TO PROPERTY LINE:
TELEPHONE: 2" C
CABLE TV: 2" C
INTERNET: 2" C
3. POLE MOUNTED FIXTURES (QTY: 3) AND UNDERGROUND CIRCUITING SHALL BE INCLUDED IN ALTERNATE #1. CIRCUIT BREAKER SHALL BE PROVIDED AS PART OF BASE BID, AND LABELED "SPARE" IF ALTERNATE IS NOT ACCEPTED.
4. PROVIDE GFI RECEPTACLE WITH WEATHERPROOF WHILE IN USE COVER INSIDE BACKFLOW PREVENTER ENCLOSURE FOR HEATER.

GENERAL ELECTRICAL NOTES

1. REFER TO ELECTRICAL DIVISION SPECIFICATIONS FOR ADDITIONAL REQUIREMENTS.
2. "PROVIDE" SHALL MEAN "FURNISH AND INSTALL" WHEN USED.
3. AS A MINIMUM ALL ELECTRICAL WORK SHALL COMPLY WITH THE 2020 EDITION OF THE NATIONAL ELECTRICAL CODE.
4. ALL WORK SHALL COMPLY WITH APPLICABLE LOCAL, STATE, AND FEDERAL CODES TO THE SATISFACTION OF THE AUTHORITY HAVING JURISDICTION (AHJ).
5. CONTRACTOR SHALL VISIT THE SITE AND FIELD VERIFY EXISTING CONDITIONS PRIOR TO BIDDING ANY WORK TO BE DONE.
6. CONTRACTOR SHALL COORDINATE HIS WORK WITH THAT OF OTHER TRADES AND WITH ALL APPLICABLE UTILITY COMPANIES.
7. ALL WIRING SHALL BE COPPER, WITH MINIMUM SIZE OF #12 AWG.
8. CIRCUITS SHALL HAVE DEDICATED NEUTRALS. NEUTRALS SHALL NOT BE SHARED.
9. INTERIOR AND EXTERIOR LIGHTING SYSTEM CONTROLS SHALL BE FURNISHED, INSTALLED AND COMMISSIONED IN COMPLIANCE WITH SECTION C405 OF THE 2021 INTERNATIONAL ENERGY CONSERVATION CODE.
10. CONTRACTOR SHALL COORDINATE ELECTRICAL ROUGH-IN, POWER AND DATA REQUIREMENTS WITH ALL EQUIPMENT.
11. PROVIDE ELECTRICAL CONNECTION AS DIRECTED TO HVAC AIR HANDLING UNITS, PROVIDED WITH INTEGRAL DISCONNECTING MEANS / OVERCURRENT PROTECTION.



ASSOCIATED DESIGN GROUP, INC.
3909 W Congress Street, Suite 201
Lafayette, Louisiana 70506
Phone: (337) 234-5710
Email: adginc@adginc.org
Project No. 25190

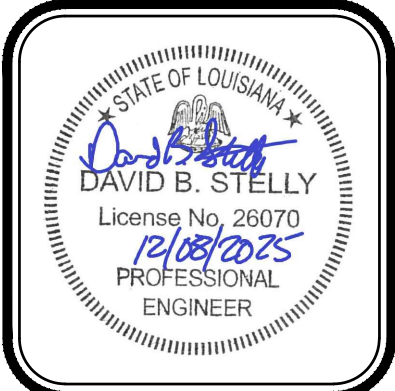


Project No.	0524
Drawn By:	
Approved By:	
Preliminary Date:	08.08.2025
Release Date:	
File:	

WAYNE LAWRENCE COCO, AIA, ARCHITECT, L.L.C.
P.O. BOX 111 - 510 MAIN ST.
SIMMESPORT, LOUISIANA 71369
(318) 941-2392 / FAX (318) 941-2821
Coco & Company
a professional architectural company

THE JOE WEBB MEMORIAL BRANCH LIBRARY
FOR
THE CLAIBORNE PARISH LIBRARY
HAYNESVILLE, LOUISIANA

Sheet Number:
E1.1
29 of 32



Project No.	0524
Drawn By:	
Approved By:	
Preliminary Date:	08.08.2025
Release Date:	
File:	

WAYNE LAWRENCE COCO, AIA, ARCHITECT, L.L.C.
Coco & Company

P.O. BOX 111 - 510 MAIN ST.
SIMMESPORT, LOUISIANA 71369
(318) 941-2392 / FAX (318) 941-2821

a professional architectural company

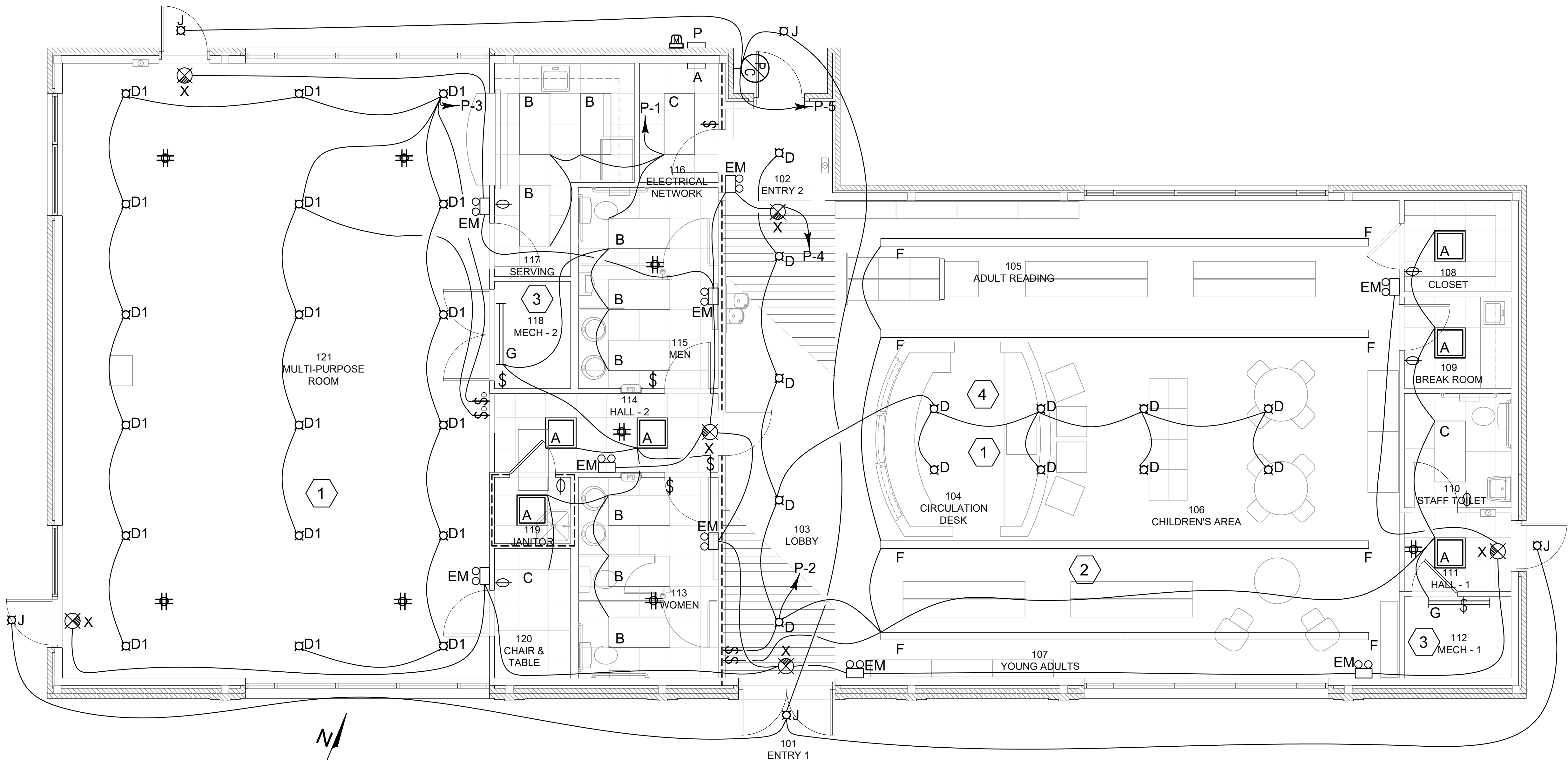
THE JOE WEBB MEMORIAL BRANCH LIBRARY

FOR

THE CLAIBORNE PARISH LIBRARY

HAYNESVILLE, LOUISIANA

Sheet Number:	E2.1
	30 of 32



1 ELECTRICAL LIGHTING PLAN
SCALE = 1/4" = 1'-0"

LIGHTING FIXTURE SCHEDULE							
MARK	DESCRIPTION	LOAD	LAMPS	VOLTS	MOUNTING	MANUFACTURER	CATALOG No.
A	2X2 LAY-IN	30.1	LED	120	LAY IN	LITHONIA	CPX 2X2 3200LM 80CRI 35K SWL MVOLT
B	2X4 LAY-IN	24.6	LED	120	LAY IN	LITHONIA	CPX 2X4 3000LM 80CRI 35K SWL MVOLT
C	2X4 LAY-IN	40	LED	120	LAY IN	LITHONIA	CPX 2X4 5000LM 80CRI 35K SWL MVOLT
D	6" CYLINDER	22.5	LED	120	PENDANT	LITHONIA	LDN6CYL 35/20 L06AR LD MVOLT GZ1 PM
D1	6" CYLINDER	34.8	LED	120	PENDANT	LITHONIA	LDN6CYL 35/40 L06AR LD MVOLT GZ1 PM
EM	EMERGENCY LIGHT	3.2	LED	120	PENDANT	LITHONIA	ELM4L
F	32' LINEAR PENDANT	202	LED	120	PENDANT	MARK ARCH LIGHTING	S4PD 32FT 90CRI 35K 800LMF DRP1
G	VAPORTIGHT	34	LED	120	SUSPENDED	LITHONIA	CSVT L48 4000LM MVOLT 3500K 80CRI
H	FLOOD LIGHT(FLAG POLE)	23	LED	120	INGRADE	HYDREL	IGF6 A LED P2 80CRI 40K MVOLT 15DEG OT FLC 34B ZT
J	CANOPY FIXTURE W/ EMERGENCY DRIVER	9.2	LED	120	SURFACE	JUNO	JSF 5IN 07LM SSW5 90CRI MVOLT ZT WH
P	EXTERIOR POLE LIGHT MOUNTED ON 10FT POLE	56	LED	120	POLE	STERNBERG	PT D650-5P- VCOB-4L 40 TS MDL03 A DBT POLE: 4210FP4
X	EXIT SIGN	5	LED	120	SUSPENDED	LITHONIA	LQM S W 3 R MVOLT ELN SD

LIGHTING CONTROL SEQUENCE OF OPERATIONS

CORRIDORS / LOBBY:
TIMECLOCK WILL ALLOW POWER TO LIGHTING WHEN SCHEDULED. FIXTURES AUTOMATICALLY TURN ON UPON MOTION DETECTION AND WILL TURN OFF AFTER 20 MIN OF VACANCY VIA OCCUPANCY SENSOR. TOGGLE SWITCHES LOCATED AS LOCAL MANUAL CONTROL.

RESTROOMS:
OCCUPANCY SENSOR TURNS ON LIGHTING UPON MOTION DETECTION. LIGHTING TURNS OFF AFTER 20 MIN OF VACANCY.

ENCLOSED OFFICE:
MANUAL ON SWITCH TURNS ON LIGHTING. LIGHTING TURNS OFF AFTER 20 MIN OF VACANCY VIA OCCUPANCY SENSOR.

STORAGE/SUPPORT:
MANUAL ON SWITCH TURNS ON LIGHTING. LIGHTING TURNS OFF AFTER 20 MIN OF VACANCY VIA OCCUPANCY SENSOR.

ELEC AND HVAC ROOMS:
MANUAL - ON AND MANUAL - OFF. NO AUTOMATIC CONTROLS

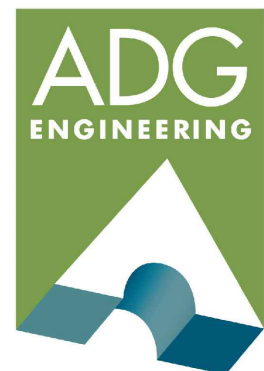
EXTERIOR POLE LIGHTING:
PHOTOCELL TO TURN OFF LIGHTING WHEN SUFFICIENT DAYLIGHT PRESENT. FIXTURE MOUNTED OCCUPANCY SENSORS TO DIM FIXTURES TO 50% AFTER 20 MINUTES OF VACANCY.

EXTERIOR FACADE LIGHTING:
PHOTOCELL TO TURN OFF LIGHTING WHEN SUFFICIENT DAYLIGHT PRESENT.
TIMECLOCK TO SWITCH LIGHTING OFF FROM NOT LATER THAN 1 HOUR AFTER BUSINESS CLOSING TO NOT EARLIER THAN 1 HOUR BEFORE OPENING.

NOTE: ALL TIMECLOCKS TO MEET OR EXCEED IECC 2021 STANDARDS.

ELECTRICAL LIGHTING KEYNOTES:

- 1 BOTTOM OF FIXTURE TYPE 'D' AND FIXTURE TYPE 'D1' SUSPENDED 10' A.F.F. REFER TO ARCHITECTURAL DRAWINGS. CONFIRM FINAL FINISHES WITH ARCHITECT PRIOR TO ROUGH IN.
- 2 BOTTOM OF FIXTURE TYPE 'F' SUSPENDED 9' A.F.F. REFER TO ARCHITECTURAL DRAWINGS. CONFIRM FINAL FINISHES WITH ARCHITECT PRIOR TO ROUGH IN.
- 3 COORDINATE LIGHT FIXTURE MOUNTING LOCATION WITH MECHANICAL CONTRACTOR PRIOR TO ROUGH-IN TO AVOID CONFLICTS WITH EQUIPMENT AND DUCT WORK.
- 4 MANUAL LIGHTING CONTROLS ARE ALLOWED TO BE UTILIZED IN THIS AREA WITH LIBRARY STACKS.



ASSOCIATED DESIGN GROUP, INC.
3909 W Congress Street, Suite 201
Lafayette, Louisiana 70506
Phone: (337) 234-5710
Email: adginc@adginc.org

Project No. 25190

PANEL A

VOLTAGE 480/277V, 3ø, 4W, WYE
208/120V, 3ø, 4W, WYE
240/120V, 3ø, 4W, DELTA W/ 3ø "STINGER"

ENCLOSURE NEMA 1 (TOOL-LESS DOOR-IN-DOOR CONSTRUCTION)
NEMA 3R
NEMA 4X 320 STAINLESS STEEL
LOCKABLE COVER

FEEED TOP
BOTTOM

BRANCHES BOLT-ON, PANELBOARD CONSTR.
FUSIBLE SWITCHES, FURNISH ALL FUSES, RK5
PLUG-ON, LOADCENTER CONSTR.

NEUTRAL 100% 200%

MOUNTING SURFACE RECESSED
FREE STANDING (FRONT ACCESS ONLY)
FREE STANDING (FRONT AND REAR ACCESS)

ALL COPPER BUSSING

CKT. #	TRIP AMPS	WIRE	GND	COND.	LOAD DESCRIPTION	NOTES	A B C	NOTES	LOAD DESCRIPTION	COND.	GND	WIRE	TRIP AMPS	CKT. #
1	20	12	12	1/2	LIGHTING	---		---	LIGHTING	1/2	12	12	20	2
3	20	12	12	1/2	LIGHTING	---		---	EMERGENCY LIGHTS	1/2	12	12	20	4
5	20	12	12	1/2	EXTERIOR LIGHTS	---		---	SITE LIGHTING	1/2	12	12	20	6
7	20	12	12	1/2	SITE LIGHTING	---		---	FLAG POLE LIGHTING	1/2	12	12	20	8
9	20	12	12	1/2	RECEP	---		---	RECEP	1/2	12	12	20	10
11	20	12	12	1/2	RECEP	---		---	RECEP	1/2	12	12	20	12
13	20	12	12	1/2	RECEP	---		---	RECEP	1/2	12	12	20	14
15	20	12	12	1/2	RECEP	---		---	RECEP	1/2	12	12	20	16
17	20	12	12	1/2	RECEP	---		---	RECEP	1/2	12	12	20	18
19	20	12	12	1/2	RECEP	---		---	RECEP	1/2	12	12	20	20
21	20	12	12	1/2	RECEP	---		---	RECEP	1/2	12	12	20	22
23	20	12	12	1/2	RECEP	---		---	RECEP	1/2	12	12	20	24
25	20	12	12	1/2	RECEP	---		---	RECEP	1/2	12	12	20	26
27	20	12	12	1/2	RECEP	---		---	RECEP	1/2	12	12	20	28
29	20	12	12	1/2	RECEP	---		---	RECEP	1/2	12	12	20	30
31	20	12	12	1/2	EW	---		---	RECEP	1/2	12	12	20	32
33	20	12	12	1/2	EF/MD	---		---	CIRC PUMP	1/2	12	12	20	34
35	20	12	12	1/2	EF/MD	---		---	BACKFLOW PREVENT	1/2	12	12	20	36
37	50	8	10	3/4	IWH-1	---		---	IWH-2	1/2	12	12	20	38
39						---		---						40
41	40	8	10	3/4	WH	---		---	NETWORK RECEP	1/2	12	12	20	42
43						---		---	NETWORK RECEP	1/2	12	12	20	44
45	20	12	12	1/2	SPARE	---		---	SPARE	1/2	12	12	20	46
47	20	12	12	1/2	SPARE	---		---	SPARE	1/2	12	12	20	48
49	20	12	12	1/2	SPARE	---		---	SPARE	1/2	12	12	20	50
51	20	12	12	1/2	SPARE	---		---	SPARE	1/2	12	12	20	52
53						---		---						54
55						---		---						56
57						---		---						58
59						---		---						60

NOTES:

TOTAL LOAD = 37 KVA
TOTAL AMPS = 101 AMPS

PANEL P

VOLTAGE 480/277V, 3ø, 4W, WYE
208/120V, 3ø, 4W, WYE
240/120V, 3ø, 4W, DELTA W/ 3ø "STINGER"

ENCLOSURE NEMA 1 (TOOL-LESS DOOR-IN-DOOR CONSTRUCTION)
NEMA 3R
NEMA 4X 320 STAINLESS STEEL
LOCKABLE COVER

FEEED TOP
BOTTOM

BRANCHES BOLT-ON, PANELBOARD CONSTR.
FUSIBLE SWITCHES, FURNISH ALL FUSES, RK5
PLUG-ON, LOADCENTER CONSTR.

NEUTRAL 100% 200%

MOUNTING SURFACE RECESSED
FREE STANDING (FRONT ACCESS ONLY)
FREE STANDING (FRONT AND REAR ACCESS)

ALL COPPER BUSSING

CKT. #	TRIP AMPS	WIRE	GND	COND.	LOAD DESCRIPTION	NOTES	A B C	NOTES	LOAD DESCRIPTION	COND.	GND	WIRE	TRIP AMPS	CKT. #
1	70	4	8	1	AHU-1	---		---	AHU-2	1	8	4	70	2
3						---		---	AHU-3	1-1/2	6	1	125	4
5	20	12	12	1/2	MSCU-1	---		---	CU-1	3/4	10	10	30	6
7						---		---	CU-2	3/4	10	10	30	8
9	20	12	12	1/2	CU-1	---		---	CU-3	3/4	10	8	45	10
11						---		---						12
13						---		---						14
15	200	3/0	6	2	PANEL A	---		---						16
17						---		---						18
19						---		---						20
21	100	2	2	1-1/4	SPD	---		---						22
23						---		---						24
25						---		---						26
27						---		---						28
29						---		---						30
31						---		---						32
33						---		---						34
35						---		---						36
37						---		---						38
39						---		---						40
41						---		---						42

NOTES:

TOTAL LOAD = 81 KVA
TOTAL AMPS = 226 AMPS

ELECTRICAL LEGEND

SYMBOL	DESCRIPTION
□	LIGHTING FIXTURE - SEE FIXTURE SCHEDULE
□	LIGHTING FIXTURE - SEE FIXTURE SCHEDULE
✕	EXIT SIGN FIXTURE - SEE FIXTURE SCHEDULE
\$	SINGLE POLE TOGGLE SWITCH
\$	DIMMER SWITCH
* * Ø	OCCUPANCY SENSOR
*	CEILING MOUNTED OCCUPANCY SENSOR
⊖	DUPLEX CONVENIENCE OUTLET
⊖ U	DUPLEX CONVENIENCE OUTLET W/ USB PORT - HUBBELL #USB20X2W
⊖ S	DUPLEX W/TAMPERPROOF COVERPLATE. SEE SPECS
⊖	COUNTER TOP MOUNTING HEIGHT (CLEAR BACK SPLASH)
⊖	SIMPLEX OUTLET
⊖	DOUBLE-DUPLEX CONVENIENCE OUTLET
⊖	SPECIAL OUTLET
⊖	JUNCTION BOX
\$m	MOTOR RATED SWITCH
\$m	2 POLE MOTOR RATED SWITCH
⊖	MOTOR STARTER (PROVIDED BY DIV. 15 / INSTALLED BY DIV. 16)
⊖ FB	FLOOR BOX WITH COMBINATION DUPLEX POWER OUTLET AND DATA OUTLET
□	ELECTRICAL PANELBOARD
⊖	DISCONNECT SWITCH
* ▽	DATA/COMMUNICATIONS OUTLET (CABLING AND JACKS BY OWNER'S VENDOR)
⊖	CATV OUTLET
⊖	CONDUIT RUN CONCEALED IN WALL OR ABOVE CEILING
⊖	HOMERUN TO ELECTRIC PANELBOARD
----	CONDUIT RUN CONCEALED BELOW FLOOR OR IN SLAB
⊖	PHOTOELECTRIC CONTROL
⊖	120V MOTORIZED DAMPER
CT	COUNTER-TOP-HEIGHT MOUNTED
GFI	GROUND FAULT INTERRUPTER PROTECTED
WP	WEATHERPROOF
*	ROUGH-IN SHALL CONSIST OF DOUBLE GANG BACKBOX WITH SINGLE GANG PLASTER RING, 1" STUBBED ABOVE CEILING WITH NYLON BUSHING, PULLSTRING, AND APPROPRIATE COVERPLATE.
**	"c" SUBSCRIPT DENOTES CEILING MOUNT.

NOTE: This inquiry is not an application for service. It is a request for information only.
To Apply For Service: Call 1-800-368-3749

ELECTRIC SERVICE INQUIRY

RETURN TO: ENTERGY
CUSTOMER INFORMATION:
Name Claiborne Parish Public Library - HAYNESVILLE BRANCH
Address 1337, 1345 & 1363 MAIN STREET HAYNESVILLE, LOUISIANA
P.O. Box
City HAYNESVILLE State LA ZIP 71038
Contact Pam Suggs Voice Phone (818) 927-3845 FAX ()
psuggs@cpllibrary.org

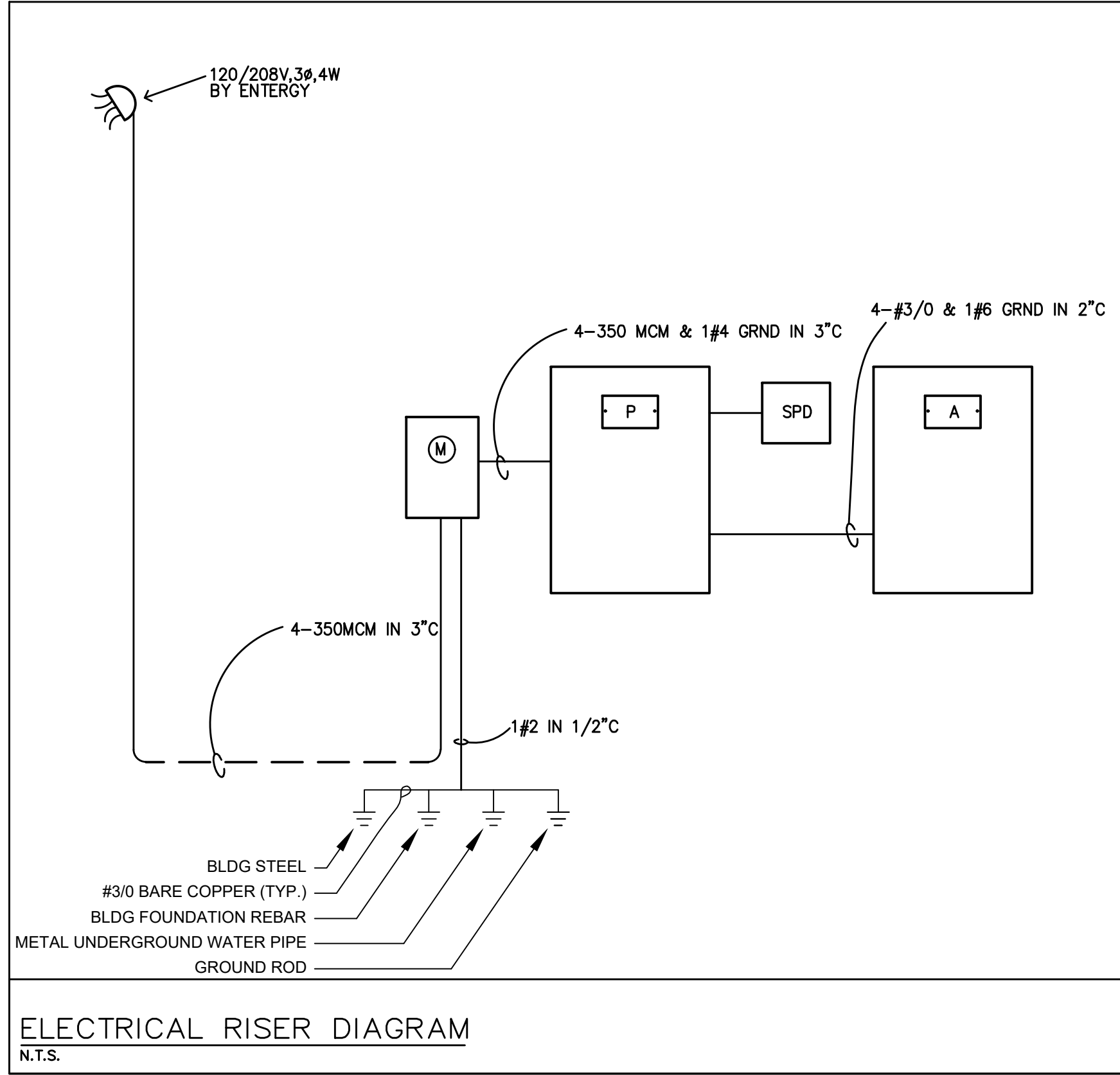
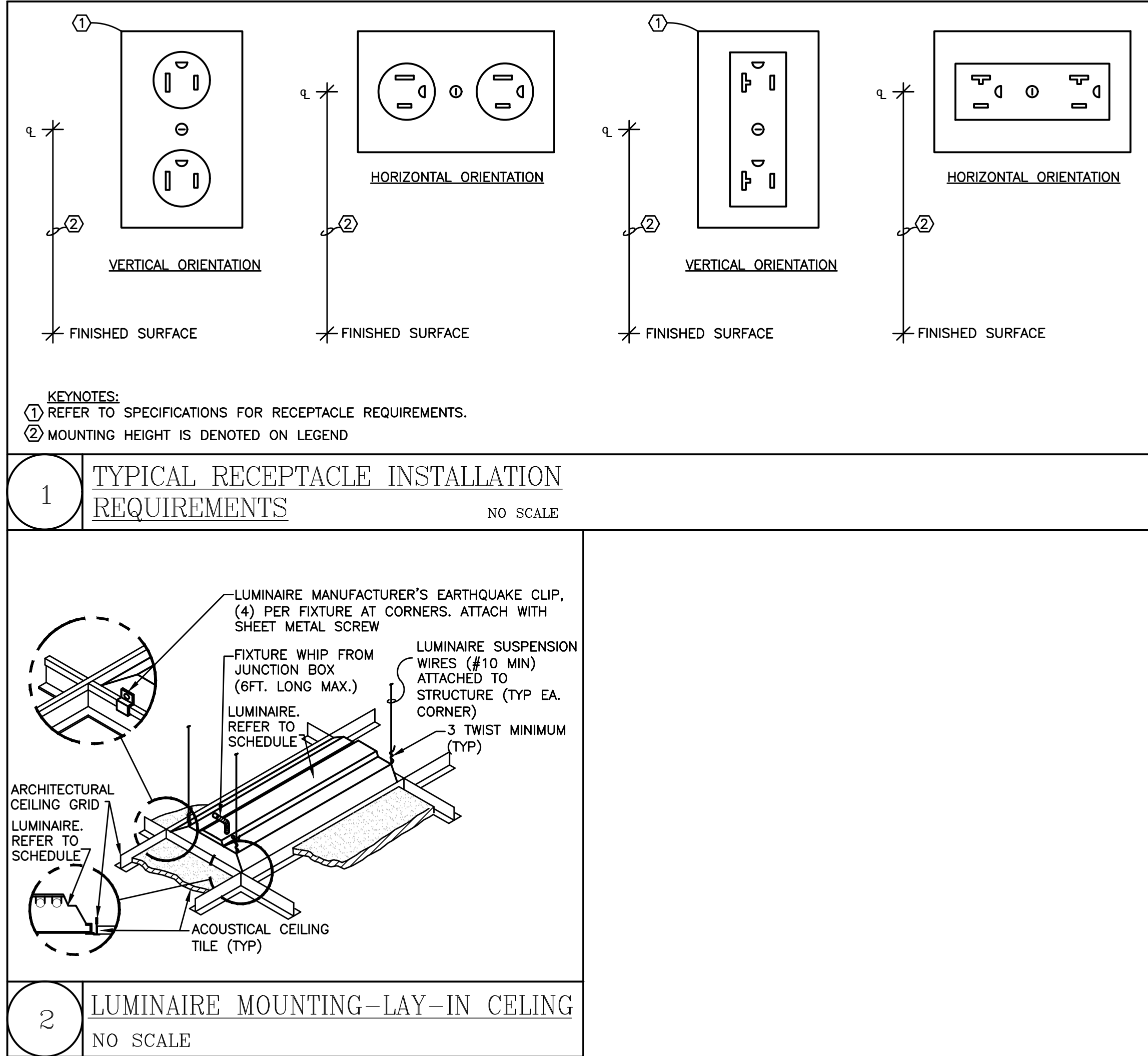
SERVICE LOCATION: (Attach applicable maps or prints such as site, utility plan, etc.)
Lot or Tract 1337, 1345 & 1363 MAIN STREET HAYNESVILLE, LOUISIANA
Street MAIN STREET City HAYNESVILLE State LA ZIP 71038

SERVICE DETAILS: (check one response for items 1 through 3):
1. New customer or Increased load w/ Acc# or Existing Building Turn-On
2. Requesting: Overhead Service Underground Service
3. Has point of service (metering location) been approved by ENTERGY? Yes No
REQUESTED IN-SERVICE DATES: temporary permanent

PROPOSED BUILDING CLASSIFICATION:
SIC Code (or, check one of the following): LIBRARY
residential office restaurant/bar retail grocery warehouse school university hospital hotel/motel
mobile home nursing home misc. non-manufacturing building misc. non-manufacturing (no building) misc. manufacturing

LOAD SUMMARY:
Phase/Voltage: 1Ø-120/240 3Ø-120/240 3Ø-120/208 3 Ø-277/480 ** Other
Service Entrance Ampacity: 300A
Quantity & Size of Conductors Being Run by Electrician: Qty: 4 Size: 350MCM
All-electric facility? Yes no Computer equipment? Yes no

Single Ø Three Ø Comments
Square Footage 3695 Sq/Ft.
Lights 3.6 kW kW
Cooking kW kW
Heating 39.6 kW kW
A/C (heat pump) 21.6 kW DX units
Note: If more than one A/C unit please list the total load in the appropriate column and largest unit in the comment section.
Refrigeration 0.5 kW kW
Water Heating 17.5 kW kW
Motors 2 HP HP two 0.5HP Motor, one 1HP motor for AHUs
Motors HP HP
Receptacles 23.5 kW kW
Miscellaneous 0.2 kW kW
Total Connected 84.9 kW 21.6 kW
Existing Peak Load kW kW
Total Diversified kW kW
Largest Motor 1 HP- X 1Ø 3Ø Motor HP Code No.
Locked Motor Current Amps, Motor Duty: hrs./day continuous intermittent
Submitted by: EMILY CARBO Title: ASSISTANT PROJECT MANAGER
Date: 8-6-25 Phone No.: 337-234-5710 Alt. No.: 318-451-6672 Rev. 7/28/14



ASSOCIATED DESIGN GROUP, INC.
3909 W Congress Street, Suite 101
Lafayette, Louisiana 70506
Phone: (337) 234-5710
Email: adginc@adginc.org

Project No. 25190



Project No. 0524
Drawn By:
Approved By:
Preliminary Date:
Release Date: 08.08.2025
File:

WAYNE LAWRENCE COCO, AIA, ARCHITECT, L.L.C.
P.O. BOX 111 - 510 MAIN ST.
SIMMESPORT, LOUISIANA 71369
(318) 941-2392 / FAX (318) 941-2821
Coco & Company
a professional architectural company

THE JOE WEBB MEMORIAL BRANCH LIBRARY
FOR
THE CLAIBORNE PARISH LIBRARY
HAYNESVILLE, LOUISIANA

Sheet Number:
E4.1
32 of 32